

# STEAP4 Rabbit pAb

货号: B21075

## 产品信息

反应	Human,Mouse,Rat
宿主	Rabbit
克隆性	Polyclonal
预测反应	
应用	WB IF/ICC
推荐浓度	<b>WB:</b> 1:500 - 1:2000 <b>IF/ICC:</b> 1:50 - 1:200
理论分子量	31kDa/51kDa
实测分子量	52kDa
形式	Liquid
保存条件	Store at -20°C. Avoid freeze / thaw cycles. Buffer: PBS with 0.01% thiomersal,50% glycerol,pH7.3.
偶联物	Unconjugated
阳性对照	Rat liver,Rat lung
细胞定位	Cell membrane,Golgi apparatus membrane,Multi-pass membrane protein
纯化	Affinity purification

## 抗原信息

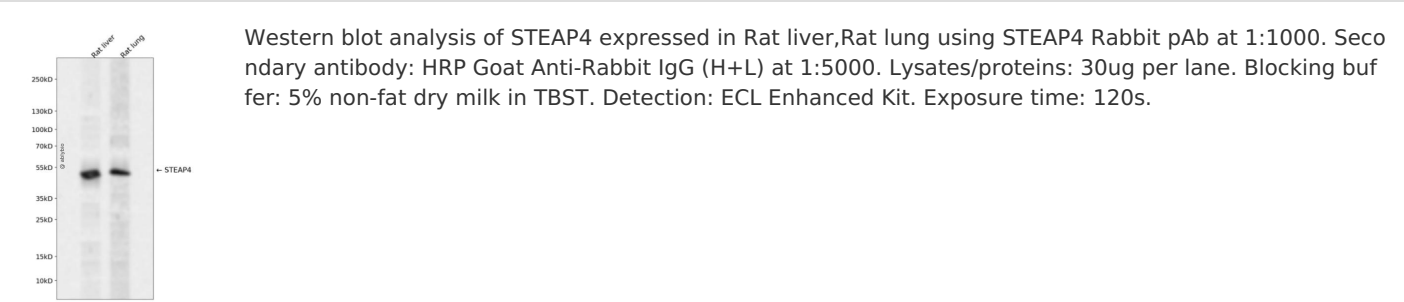
抗原信息	Recombinant fusion protein containing a sequence corresponding to amino acids 1-100 of human STEAP4 (NP_001192245).
序列	MEKTCIDALPLTMNSSEKQETVCIFGTGDFGRSLGLKMLQCGYSVVFGSRNPQKTTLLPSGAEVLSYSEAAKKGIIIIAHR EHYDFLTELTEVLNGKI

## 靶点信息

研究背景	The protein encoded by this gene belongs to the STEAP (six transmembrane epithelial antigen of prostate ) family, and resides in the golgi apparatus. It functions as a metalloreductase that has the ability to reduce both Fe(3+) to Fe(2+) and Cu(2+) to Cu(1+), using NAD(+) as acceptor. Studies in mice and human suggest that this gene maybe involved in adipocyte development and metabolism, and may contribute to the normal biology of the prostate cell, as well as prostate cancer progression. Alternatively spliced transcript variants encoding different isoforms have been found for this gene. [provided by RefSeq, Apr 2011]
------	---

基因ID	79689
基因名	STEAP4
Swiss	Q687X5
别名	STAMP2;SchLAH;TIARP;TNFAIP9;STEAP4

产品验证



实验步骤

访问官网浏览详情: [www.ablybio.cn](http://www.ablybio.cn)