

MRPL34 Rabbit pAb

货号: B21071

产品信息

反应	Human,Mouse,Rat
宿主	Rabbit
克隆性	Polyclonal
预测反应	
应用	WB IF/ICC
推荐浓度	WB: 1:500 - 1:2000 IF/ICC: 1:50 - 1:200
理论分子量	10kDa
实测分子量	10kDa
形式	Liquid
保存条件	Store at -20°C. Avoid freeze / thaw cycles. Buffer: PBS with 0.01% thiomersal,50% glycerol,pH7.3.
偶联物	Unconjugated
阳性对照	Mouse liver,Mouse heart,Mouse kidney,Rat liver,Rat heart
细胞定位	mitochondrial inner membrane,mitochondrial ribosome,mitochondrion
纯化	Affinity purification

抗原信息

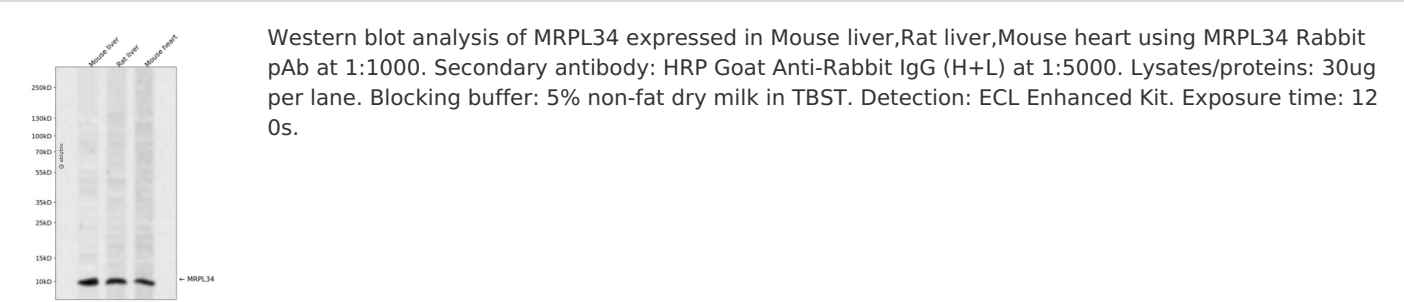
抗原信息	Recombinant fusion protein containing a sequence corresponding to amino acids 16-92 of human MRPL34 (NP_076426.1).
序列	AALLGGRWLQPRAWLGFPDAWGLPTPQQARGKARGNEYQPSNIKRKNKHGWVRRRLSTPAGVQVILRRMLKGRKSLSH

靶点信息

研究背景	Mammalian mitochondrial ribosomal proteins are encoded by nuclear genes and help in protein synthesis within the mitochondrion. Mitochondrial ribosomes (mitoribosomes) consist of a small 28S subunit and a l arge 39S subunit. They have an estimated 75% protein to rRNA composition compared to prokaryotic ribo somes, where this ratio is reversed. Another difference between mammalian mitoribosomes and prokaryo tic ribosomes is that the latter contain a 5S rRNA. Among different species, the proteins comprising the m itoribosome differ greatly in sequence, and sometimes in biochemical properties, which prevents easy rec ognition by sequence homology. This gene encodes a 39S subunit protein. [provided by RefSeq, Jul 2008]
------	--

基因ID	64981
基因名	MRPL34
Swiss	Q9BQ48
别名	L34mt;MRPL34

产品验证



实验步骤

访问官网浏览详情: www.ablybio.cn