

# LGALS13 Rabbit pAb

货号: B21012

产品信息

反应	Human
宿主	Rabbit
克隆性	Polyclonal
预测反应	
应用	WB
推荐浓度	<b>WB:</b> 1:500 - 1:2000
理论分子量	16kDa
实测分子量	16kDa
形式	Liquid
保存条件	Store at -20°C. Avoid freeze / thaw cycles. Buffer: PBS with 0.01% thiomersal,50% glycerol,pH7.3.
偶联物	Unconjugated
阳性对照	SH-SY5Y
细胞定位	cytoplasm,nuclear body,nuclear matrix,nucleoplasm
纯化	Affinity purification

抗原信息

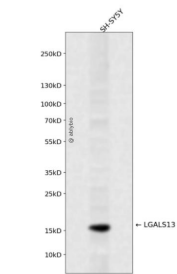
抗原信息	Recombinant fusion protein containing a sequence corresponding to amino acids 30-139 of human LGALS 13 (NP_037400.1).
序列	FINDPQLQVDFYTDMDSDIAFRFRVHFGNHVVMNRREFGIWMLEETTDYVPFEDGKQFELCIYVHYNEYEIKVNGIRIY GFVHRIPPSFVKMVQVSRDISLTSVCVCN

靶点信息

研究背景	Lysophospholipases are enzymes that act on biological membranes to regulate the multifunctional lysophospholipids. The protein encoded by this gene has lysophospholipase activity. It is composed of two identical subunits which are held together by disulfide bonds. This protein has structural similarity to several members of the beta-galactoside-binding S-type lectin family. [provided by RefSeq, Jul 2008]
基因ID	29124

基因名	LGALS13
Swiss	Q9UHV8
别名	GAL13;PLAC8;PP13;LGALS13

产品验证



Western blot analysis of LGALS13 expressed in SH-SY5Y using LGALS13 Rabbit pAb at 1:1000. Secondary antibody: HRP Goat Anti-Rabbit IgG (H+L) at 1:5000. Lysates/proteins: 30ug per lane. Blocking buffer: 5% non-fat dry milk in TBST. Detection: ECL Enhanced Kit. Exposure time: 120s.

实验步骤

访问官网浏览详情: [www.ablybio.cn](http://www.ablybio.cn)