

CAPN7 Rabbit pAb

货号: B20992

产品信息

| | |
|-------|--|
| 反应 | Human,Mouse,Rat |
| 宿主 | Rabbit |
| 克隆性 | Polyclonal |
| 预测反应 | |
| 应用 | WB IF/ICC |
| 推荐浓度 | WB: 1:500 - 1:2000 IF/ICC: 1:50 - 1:200 |
| 理论分子量 | 92kDa |
| 实测分子量 | 93kDa |
| 形式 | Liquid |
| 保存条件 | Store at -20°C. Avoid freeze / thaw cycles. Buffer: PBS with 0.01% thiomersal,50% glycerol,pH7.3. |
| 偶联物 | Unconjugated |
| 阳性对照 | Jurkat |
| 细胞定位 | centrosome,cytosol,extracellular exosome,nucleus |
| 纯化 | Affinity purification |

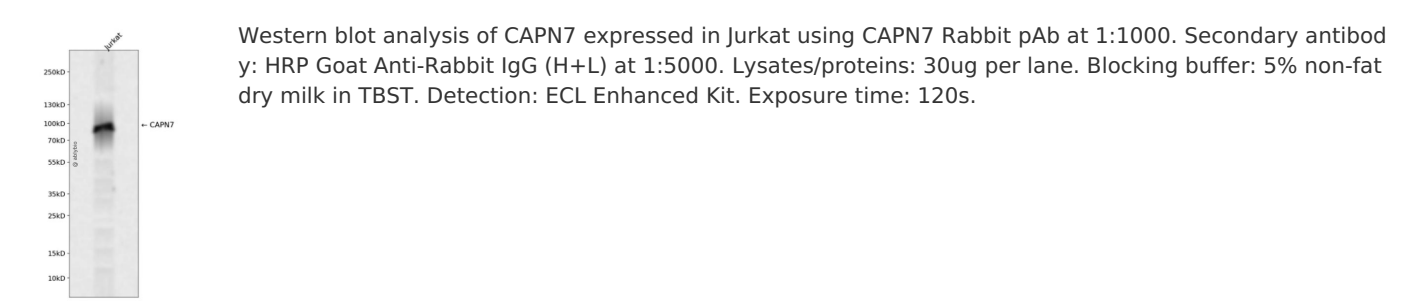
抗原信息

| | |
|------|---|
| 抗原信息 | Recombinant fusion protein containing a sequence corresponding to amino acids 20-220 of human CAPN7 (NP_055111.1). |
| 序列 | RDHEGRYSEAVFYKAAQALIYAEMAGSSLENIQEKITEYLERVQALHSAVQSKSADPLKSKHQDLERAHFLVTQAFDE DEKENVEDAIELYTEAVDLCLKTSYETADKVLQNKLKQLARQALDRAEALSEPLTKPVGKISSTSVKPKPPVRAHFPLGANP FLERPQSFISPPQSCDAQGQRYTAAEEIVLRRTTSKING |

靶点信息

| | |
|-------|---|
| 研究背景 | Calpains are ubiquitous, well-conserved family of calcium-dependent, cysteine proteases. The calpain proteins are heterodimers consisting of an invariant small subunit and variable large subunits. The large subunit possesses a cysteine protease domain, and both subunits possess calcium-binding domains. Calpains have been implicated in neurodegenerative processes, as their activation can be triggered by calcium influx and oxidative stress. The function of the protein encoded by this gene is not known. An orthologue has been found in mouse but it seems to diverge from other family members. The mouse orthologue is thought to be calcium independent with protease activity. [provided by RefSeq, Jul 2008] |
| 基因ID | 23473 |
| 基因名 | CAPN7 |
| Swiss | Q9Y6W3 |
| 别名 | CALPAIN7;PALBH;CAPN7;calpain-7 |

产品验证



实验步骤

访问官网浏览详情: www.ablybio.cn