

GALR2 Rabbit pAb

货号: B20927

产品信息

反应	Mouse
宿主	Rabbit
克隆性	Polyclonal
预测反应	
应用	WB
推荐浓度	WB: 1:500 - 1:2000
理论分子量	
实测分子量	47kDa
形式	Liquid
保存条件	Store at -20°C. Avoid freeze / thaw cycles. Buffer: PBS with 0.01% thiomersal,50% glycerol,pH7.3.
偶联物	Unconjugated
阳性对照	Mouse brain,Mouse liver
细胞定位	cilium,plasma membrane
纯化	Affinity purification

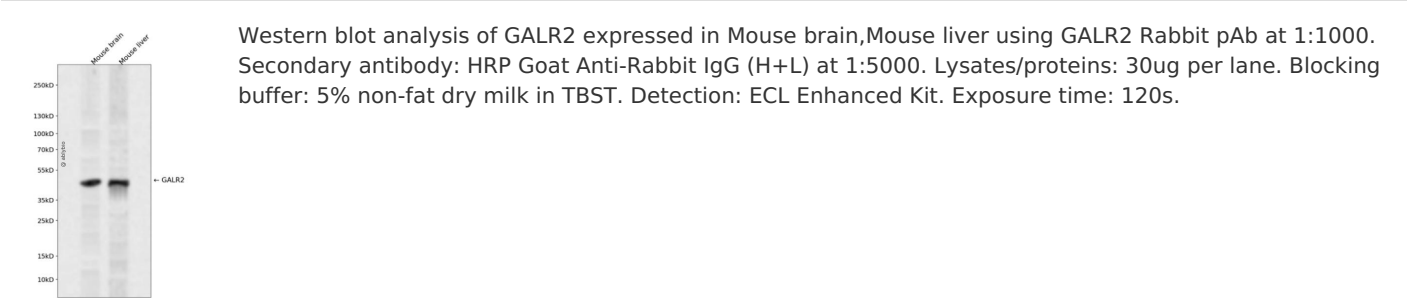
抗原信息

抗原信息	A synthetic peptide corresponding to a sequence within amino acids 50-150 of human GALR2 (NP_003848.1).
序列	LLRGQAVSTTNLFILNLGVADLCFILCCVPFQATIYTLDGWVFGSLCKAVHFLIFLTMHASSFTLAAVSLDRYLAI RYPLHS REL RTPRNALAAIGLIW

靶点信息

研究背景	Galanin is an important neuromodulator present in the brain, gastrointestinal system, and hypothalamopituitary axis. It is a 30-amino acid non-C-terminally amidated peptide that potently stimulates growth hormone secretion, inhibits cardiac vagal slowing of heart rate, abolishes sinus arrhythmia, and inhibits postprandial gastrointestinal motility. The actions of galanin are mediated through interaction with specific membrane receptors that are members of the 7-transmembrane family of G protein-coupled receptors. GALR2 interacts with the N-terminal residues of the galanin peptide. The primary signaling mechanism for GALR2 is through the phospholipase C/protein kinase C pathway (via Gq), in contrast to GALR1, which communicates its intracellular signal by inhibition of adenylyl cyclase through Gi. However, it has been demonstrated that GALR2 couples efficiently to both the Gq and Gi proteins to simultaneously activate 2 independent signal transduction pathways. [provided by RefSeq, Jul 2008]
基因ID	8811
基因名	GALR2
Swiss	O43603
别名	GAL2-R;GALNR2;GALR-2;GALR2

产品验证



实验步骤

访问官网浏览详情: www.ablybio.cn