

GSTM1 Rabbit pAb

货号: B20874

产品信息

反应	Human,Mouse,Rat
宿主	Rabbit
克隆性	Polyclonal
预测反应	
应用	WB IF/ICC
推荐浓度	WB: 1:500 - 1:1000 IF/ICC: 1:50 - 1:100
理论分子量	21kDa/25kDa
实测分子量	28KDa
形式	Liquid
保存条件	Store at -20°C. Avoid freeze / thaw cycles. Buffer: PBS with 0.01% thiomersal,50% glycerol,pH7.3.
偶联物	Unconjugated
阳性对照	HeLa,Mouse ovary,Mouse brain,Rat brain
细胞定位	Cytoplasm
纯化	Affinity purification

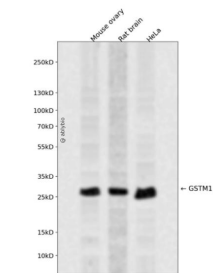
抗原信息

抗原信息	Recombinant fusion protein containing a sequence corresponding to amino acids 1-181 of human GSTM1 (NP_666533.1).
序列	MPMILGYWDIRGLAHAIRLLLEYTDSSYEKKYTMGDAPDYDRSQWLNEKFKLGLDFPNLPYLIDGAHKITQSNAILCYIARK HNLCKETEEKIRVDILENQTMDNHMLGMICYNPEFEKLPKYLEELPEKCLKLYSEFLGKRPWFAGNKGLEKISAYMKSSR FLPRPVFSKMAVWGNK

靶点信息

研究背景	Cytosolic and membrane-bound forms of glutathione S-transferase are encoded by two distinct supergene families. At present, eight distinct classes of the soluble cytoplasmic mammalian glutathione S-transferases have been identified: alpha, kappa, mu, omega, pi, sigma, theta and zeta. This gene encodes a glutathione S-transferase that belongs to the mu class. The mu class of enzymes functions in the detoxification of electrophilic compounds, including carcinogens, therapeutic drugs, environmental toxins and products of oxidative stress, by conjugation with glutathione. The genes encoding the mu class of enzymes are organized in a gene cluster on chromosome 1p13.3 and are known to be highly polymorphic. These genetic variations can change an individual's susceptibility to carcinogens and toxins as well as affect the toxicity and efficacy of certain drugs. Null mutations of this class mu gene have been linked with an increase in a number of cancers, likely due to an increased susceptibility to environmental toxins and carcinogens. Multiple protein isoforms are encoded by transcript variants of this gene. [provided by RefSeq, Jul 2008]
基因ID	2944
基因名	GSTM1
Swiss	P09488
别名	GST1;GSTM1-1;GSTM1a-1a;GSTM1b-1b;GTH4;GTM1;H-B;MU;MU-1;GSTM1

产品验证



Western blot analysis of GSTM1 expressed in Mouse ovary,Rat brain,HeLa using GSTM1 Rabbit pAb at 1:1000. Secondary antibody: HRP Goat Anti-Rabbit IgG (H+L) at 1:5000. Lysates/proteins: 30ug per lane . Blocking buffer: 5% non-fat dry milk in TBST. Detection: ECL Enhanced Kit. Exposure time: 120s.

实验步骤

访问官网浏览详情: www.ablybio.cn