

Phospho-Tau-Ser202/Thr205 Rabbit pAb

货号: B20828

产品信息

反应	Human,Mouse
宿主	Rabbit
克隆性	Polyclonal
预测反应	
应用	WB IF/ICC
推荐浓度	WB: 1:500 - 1:1000 IF/ICC: 1:50 - 1:100
理论分子量	32-45kDa/78- 80kDa
实测分子量	50-80kDa
形式	Liquid
保存条件	Store at -20°C. Avoid freeze / thaw cycles. Buffer: PBS with 0.01% thiomersal,50% glycerol,pH7.3.
偶联物	Unconjugated
阳性对照	HeLa
细胞定位	Cell membrane,Cell projection,Cytoplasm,Cytoplasmic side,Peripheral membrane protein,axon,cytoskeleton,cytosol
纯化	Affinity purification

抗原信息

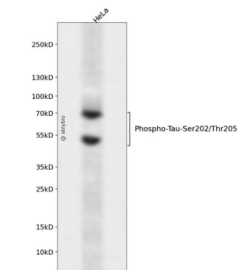
抗原信息	A synthetic phosphorylated peptide around S519 & T522 of human Tau (NP_058519.3?).
序列	GSPGTP

靶点信息

研究背景	This gene encodes the microtubule-associated protein tau (MAPT) whose transcript undergoes complex, regulated alternative splicing, giving rise to several mRNA species. MAPT transcripts are differentially expressed in the nervous system, depending on stage of neuronal maturation and neuron type. MAPT gene mutations have been associated with several neurodegenerative disorders such as Alzheimer's disease, Pick's disease, frontotemporal dementia, cortico-basal degeneration and progressive supranuclear palsy.
基因ID	4137

基因名	MAPT
Swiss	P10636
别名	DDPAC;FTDP-17;MAPTL;MSTD;MTBT1;MTBT2;PPND;PPP1R103;TAU;MAPT;Tau

产品验证



Western blot analysis of Phospho-Tau-Ser202/Thr205 expressed in HeLa using Phospho-Tau-Ser202/Thr205 Rabbit pAb at 1:1000. Secondary antibody: HRP Goat Anti-Rabbit IgG (H+L) at 1:5000. Lysates /proteins: 30ug per lane. Blocking buffer: 5% non-fat dry milk in TBST. Detection: ECL Enhanced Kit. Exposure time: 120s.

实验步骤

访问官网浏览详情: www.ablybio.cn