

# RHOU Rabbit pAb

货号: B20714

## 产品信息

反应	Mouse
宿主	Rabbit
克隆性	Polyclonal
预测反应	
应用	WB
推荐浓度	<b>WB:</b> 1:500 - 1:2000
理论分子量	
实测分子量	30kD
形式	Liquid
保存条件	Store at -20°C. Avoid freeze / thaw cycles. Buffer: PBS with 0.01% thiomersal,50% glycerol,pH7.3.
偶联物	Unconjugated
阳性对照	
细胞定位	cell projection,cytosol,focal adhesion,plasma membrane,podosome
纯化	Affinity purification

## 抗原信息

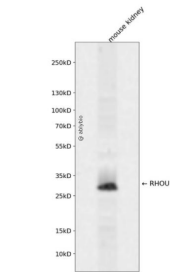
抗原信息	A synthetic peptide corresponding to a sequence within amino acids 40-100 of human RHOU (NP_067028.1).
序列	GRAGGAEGRGVKCVLVGDGAVGKTSLVVSYTTNGYPTEYIPTAFDNFSAVVSVDGRPVRLQ

## 靶点信息

研究背景	This gene encodes a member of the Rho family of GTPases. This protein can activate PAK1 and JNK1, and can induce filopodium formation and stress fiber dissolution. It may also mediate the effects of WNT1 signaling in the regulation of cell morphology, cytoskeletal organization, and cell proliferation. A non-coding transcript variant of this gene results from naturally occurring read-through transcription between this locus and the neighboring DUSP5P (dual specificity phosphatase 5 pseudogene) locus.
基因ID	58480

基因名	RHOU
Swiss	Q7L0Q8
别名	RHOU;ARHU;CDC42L1;G28K;WRCH1;hG28K

产品验证



Western blot analysis of RHOU expressed in mouse kidney using RHOU Rabbit pAb at 1:1000. Secondary antibody: HRP Goat Anti-Rabbit IgG (H+L) at 1:5000. Lysates/proteins: 30ug per lane. Blocking buffer: 5% non-fat dry milk in TBST. Detection: ECL Enhanced Kit. Exposure time: 120s.

实验步骤

访问官网浏览详情: [www.ablybio.cn](http://www.ablybio.cn)