

# MAPK13 Rabbit pAb

货号: B20598

产品信息

反应	Human,Mouse,Rat
宿主	Rabbit
克隆性	Polyclonal
预测反应	
应用	WB
推荐浓度	<b>WB:</b> 1:500 - 1:2000
理论分子量	28kDa/42kDa
实测分子量	42kDa
形式	Liquid
保存条件	Store at -20°C. Avoid freeze / thaw cycles. Buffer: PBS with 0.02% sodium azide,50% glycerol,pH7.3.
偶联物	Unconjugated
阳性对照	22Rv1,5637,Mouse kidney,Mouse lung,Mouse pancreas,Rat kidney
细胞定位	cytoplasm,cytosol,nucleus
纯化	Affinity purification

抗原信息

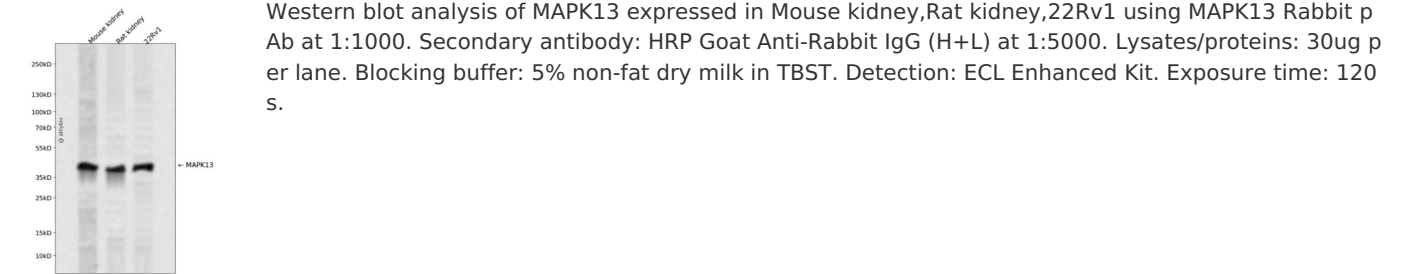
抗原信息	A synthetic peptide corresponding to a sequence within amino acids 300-400 of human MAPK13 (O15264 ).
序列	AQALTHPFFEPFRDPEEETEAQQPFDDSL EHKLTVD EWKQH IYKEIVNFSPIARKDSRRRSGMKL

靶点信息

研究背景	This gene encodes a member of the mitogen-activated protein (MAP) kinase family. MAP kinases act as a n integration point for multiple biochemical signals, and are involved in a wide variety of cellular processe s such as proliferation, differentiation, transcription regulation and development. The encoded protein is a p38 MAP kinase and is activated by proinflammatory cytokines and cellular stress. Substrates of the enc oded protein include the transcription factor ATF2 and the microtubule dynamics regulator stathmin. Alter natively spliced transcript variants have been observed for this gene.
基因ID	5603

基因名	MAPK13
Swiss	O15264
别名	MAPK13;MAPK 13;MAPK-13;PRKM13;SAPK4;p38delta

产品验证



实验步骤

访问官网浏览详情: [www.ablybio.cn](http://www.ablybio.cn)