

# Phospho-Caveolin-1-Y14 Rabbit pAb

货号: B20362

产品信息

反应	Human,Mouse
宿主	Rabbit
克隆性	Polyclonal
预测反应	
应用	WB
推荐浓度	<b>WB:</b> 1:1000 - 1:2000
理论分子量	17kDa/20kDa
实测分子量	23kDa
形式	Liquid
保存条件	Store at -20°C. Avoid freeze / thaw cycles. Buffer: PBS with 0.01% thiomersal,50% glycerol,pH7.3.
偶联物	Unconjugated
阳性对照	HeLa,NIH/3T3
细胞定位	Cell membrane,Golgi apparatus membrane,Membrane,Membrane raft,Peripheral membrane protein,caveola
纯化	Affinity purification

抗原信息

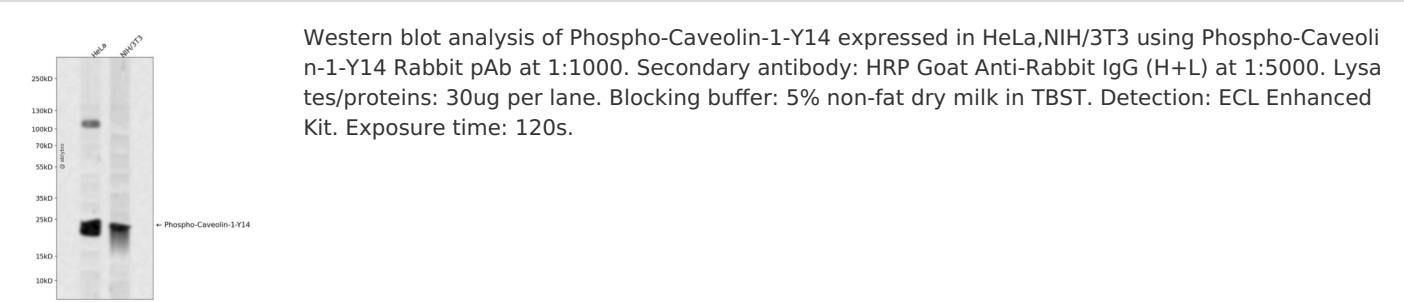
抗原信息	A synthetic phosphorylated peptide around Y14 of human Caveolin-1 (NP_001744.2).
序列	HLYTV

靶点信息

研究背景	The scaffolding protein encoded by this gene is the main component of the caveolae plasma membranes found in most cell types. The protein links integrin subunits to the tyrosine kinase FYN, an initiating step in coupling integrins to the Ras-ERK pathway and promoting cell cycle progression. The gene is a tumor suppressor gene candidate and a negative regulator of the Ras-p42/44 mitogen-activated kinase cascade. Caveolin 1 and caveolin 2 are located next to each other on chromosome 7 and express colocalizing proteins that form a stable hetero-oligomeric complex. Mutations in this gene have been associated with Berardinelli-Seip congenital lipodystrophy. Alternatively spliced transcripts encode alpha and beta isoforms of caveolin 1.
------	--

基因ID	857
基因名	CAV1
Swiss	Q03135
别名	BSCL3;CGL3;LCCNS;MSTP085;PPH3;VIP21;CAV1

产品验证



实验步骤

访问官网浏览详情: [www.ablybio.cn](http://www.ablybio.cn)