

RGS13 Rabbit pAb

货号: B20240

产品信息

反应	Human,Mouse,Rat
宿主	Rabbit
克隆性	Polyclonal
预测反应	
应用	WB IHC
推荐浓度	WB: 1:500 - 1:2000 IHC: 1:100 - 1:200
理论分子量	19kDa
实测分子量	30kDa
形式	Liquid
保存条件	Store at -20°C. Avoid freeze / thaw cycles. Buffer: PBS with 0.02% sodium azide,50% glycerol,pH7.3.
偶联物	Unconjugated
阳性对照	Mouse brain,Rat brain
细胞定位	cytosol,nucleus,plasma membrane
纯化	Affinity purification

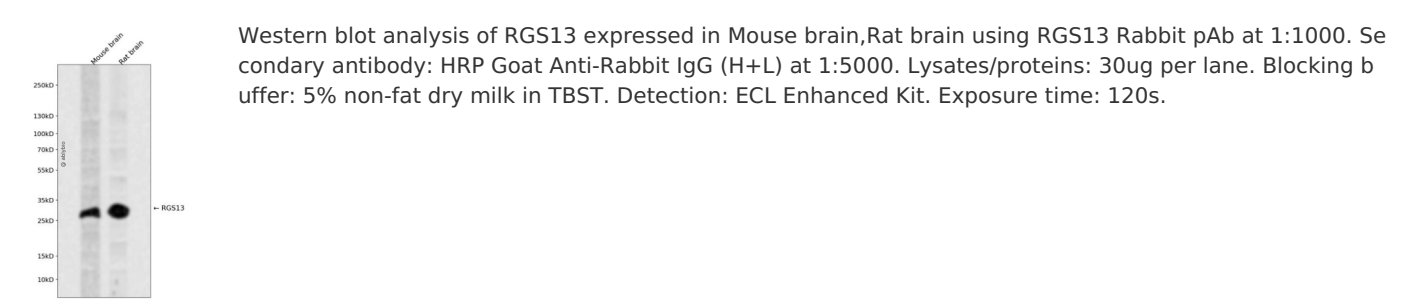
抗原信息

抗原信息	Recombinant fusion protein containing a sequence corresponding to amino acids 1-159 of human RGS13 (NP_002918.1).
序列	MSRRNCWICKMCRDESKRPPSNLTLEEVLQWAQSFENLMATKYGPVVYAAYLKMEHSDENIQFWMACETYKKIASRWSR ISRAKKLYKIYIQPQSPREINIDSSTRETIIRNIQEPTETCFEEAQKIVYMHMERDSYPRFLKSEMYQKLLKTMQSNNSF

靶点信息

研究背景	The protein encoded by this gene is a member of the regulator of G protein signaling (RGS) family. RGS family members share similarity with <i>S. cerevisiae</i> SST2 and <i>C. elegans</i> egl-10 proteins, which contain a characteristic conserved RGS domain. RGS proteins accelerate GTPase activity of G protein alpha-subunits, thereby driving G protein into their inactive GDP-bound form, thus negatively regulating G protein signaling. RGS proteins have been implicated in the fine tuning of a variety of cellular events in response to G protein-coupled receptor activation. The biological function of this gene, however, is unknown. Two transcript variants encoding the same isoform exist.
基因ID	6003
基因名	RGS13
Swiss	O14921
别名	RGS13

产品验证



实验步骤

访问官网浏览详情: www.ablybio.cn