

CLDN3 Rabbit pAb

货号: B19933

产品信息

反应	Mouse,Rat
宿主	Rabbit
克隆性	Polyclonal
预测反应	
应用	WB
推荐浓度	WB: 1:500 - 1:2000
理论分子量	23kDa
实测分子量	27kDa
形式	Liquid
保存条件	Store at -20°C. Avoid freeze / thaw cycles. Buffer: PBS with 0.01% thiomersal,50% glycerol,pH7.3.
偶联物	Unconjugated
阳性对照	Mouse liver,Mouse lung,Rat liver
细胞定位	Cell junction,Cell membrane,Multi-pass membrane protein,tight junction
纯化	Affinity purification

抗原信息

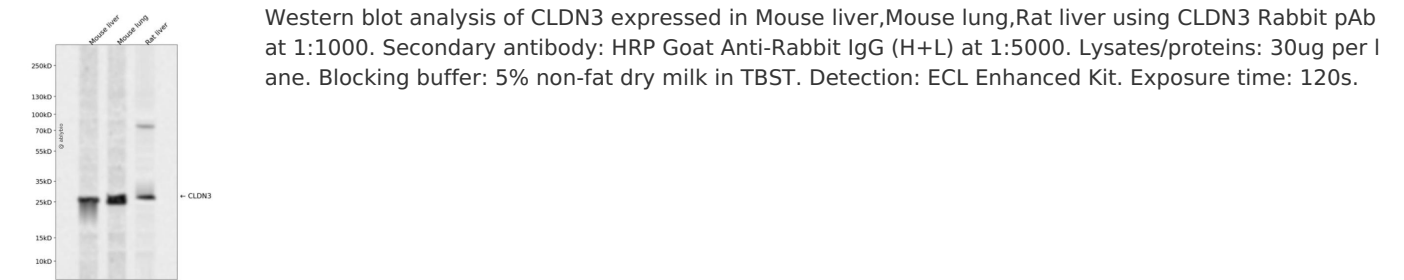
抗原信息	Recombinant fusion protein containing a sequence corresponding to amino acids 141-220 of human CLDN3 (NP_001297.1).
序列	TIIRDFYNPVPVPEAQKREMGAGLYVGWAAAAALQLLGALLCCSCPPREKKYTATKVVYSAPRSTGPGASLGTGYDRKDYV

靶点信息

研究背景	Tight junctions represent one mode of cell-to-cell adhesion in epithelial or endothelial cell sheets, forming continuous seals around cells and serving as a physical barrier to prevent solutes and water from passing freely through the paracellular space. These junctions are comprised of sets of continuous networking strands in the outwardly facing cytoplasmic leaflet, with complementary grooves in the inwardly facing extracytoplasmic leaflet. The protein encoded by this intronless gene, a member of the claudin family, is an integral membrane protein and a component of tight junction strands. It is also a low-affinity receptor for Clostridium perfringens enterotoxin, and shares aa sequence similarity with a putative apoptosis-related protein found in rat.
------	--

基因ID	1365
基因名	CLDN3
Swiss	O15551
别名	CLDN3;C7orf1;CPE-R2;CPETR2;HRVP1;RVP1;claudin-3

产品验证



实验步骤

访问官网浏览详情: www.ablybio.cn