

PCSK1 Rabbit pAb

货号: B19777

产品信息

| | |
|-------|--|
| 反应 | Mouse,Rat |
| 宿主 | Rabbit |
| 克隆性 | Polyclonal |
| 预测反应 | |
| 应用 | WB IF/ICC |
| 推荐浓度 | WB: 1:500 - 1:2000 IF/ICC: 1:50 - 1:200 |
| 理论分子量 | 79kDa/84kDa |
| 实测分子量 | 84kDa |
| 形式 | Liquid |
| 保存条件 | Store at -20°C. Avoid freeze / thaw cycles. Buffer: PBS with 0.05% proclin300,50% glycerol,pH7.3. |
| 偶联物 | Unconjugated |
| 阳性对照 | Rat brain |
| 细胞定位 | Cytoplasmic vesicle,secretory vesicle |
| 纯化 | Affinity purification |

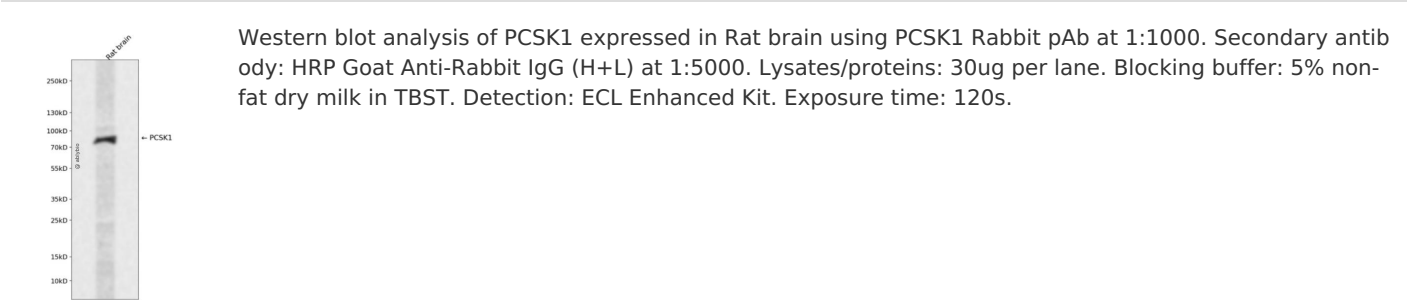
抗原信息

| | |
|------|---|
| 抗原信息 | Recombinant fusion protein containing a sequence corresponding to amino acids 28-170 of human PCSK1 (NP_000430.3). |
| 序列 | KRQFVNEWAAEIPGGPEAASAI AEELGYDLLGQIGSLENHYLFKHKNHPRRSRRSAFHITKRLSDDDRVIWAEQQYEKERS KRSALRDSALNLFNDPMWNQQWYQLQDTRMTAALPKLDLHVIPVWQKGITGKGVVITVLDDGL |

靶点信息

| | |
|-------|---|
| 研究背景 | This gene encodes a member of the subtilisin-like proprotein convertase family, which includes proteases that process protein and peptide precursors trafficking through regulated or constitutive branches of the secretory pathway. The encoded protein undergoes an initial autocatalytic processing event in the ER to generate a heterodimer which exits the ER and sorts to subcellular compartments where a second autocatalytic event takes place and the catalytic activity is acquired. The protease is packaged into and activated in dense core secretory granules and expressed in the neuroendocrine system and brain. This gene encodes one of the seven basic amino acid-specific members which cleave their substrates at single or paired basic residues. It functions in the proteolytic activation of polypeptide hormones and neuropeptides precursors. Mutations in this gene have been associated with susceptibility to obesity and proprotein convertase 1/3 deficiency. Alternatively spliced transcript variants encoding multiple isoforms have been observed for this gene |
| 基因ID | 5122 |
| 基因名 | PCSK1 |
| Swiss | P29120 |
| 别名 | PCSK1;BMIQ12;NEC1;PC1;PC3;SPC3 |

产品验证



实验步骤

访问官网浏览详情: www.ablybio.cn