

TET2 Rabbit pAb

货号: B19605

产品信息

反应	Mouse
宿主	Rabbit
克隆性	Polyclonal
预测反应	
应用	WB
推荐浓度	WB: 1:1000 - 1:2000
理论分子量	130kDa/133kDa/223kDa
实测分子量	251kDa
形式	Liquid
保存条件	Store at -20°C. Avoid freeze / thaw cycles. Buffer: PBS with 0.02% sodium azide,50% glycerol,pH7.3.
偶联物	Unconjugated
阳性对照	Mouse heart
细胞定位	nucleus
纯化	Affinity purification

抗原信息

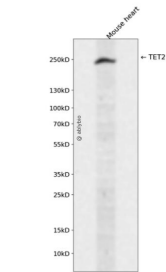
抗原信息	Recombinant fusion protein containing a sequence corresponding to amino acids 1833-2002 of human TE T2 (NP_001120680.1).
序列	VQGVASGAEDNDEVWSDSEQSFLDPDIGGVAVAPTHGSILIECAKRELHATTPLKNPNRNHPTRISLVFYQHKSMNEPKH GLALWEAKMAEKAREKEEECEKYGPDYVPQKSHGKKVKREPAEPHETSEPTYLRFIKSLAERTMSVTTDSTVTTSPYAFTRV TGPYNRYI

靶点信息

研究背景	The protein encoded by this gene is a methylcytosine dioxygenase that catalyzes the conversion of methylcytosine to 5-hydroxymethylcytosine. The encoded protein is involved in myelopoiesis, and defects in this gene have been associated with several myeloproliferative disorders. Two variants encoding different isoforms have been found for this gene.
基因ID	54790

基因名	TET2
Swiss	Q6N021
别名	MDS;KIAA1546;TET2

产品验证



Western blot analysis of TET2 expressed in Mouse heart using TET2 Rabbit pAb at 1:1000. Secondary anti body: HRP Goat Anti-Rabbit IgG (H+L) at 1:5000. Lysates/proteins: 30ug per lane. Blocking buffer: 5% no n-fat dry milk in TBST. Detection: ECL Enhanced Kit. Exposure time: 120s.

实验步骤

访问官网浏览详情: www.ablybio.cn