

CRY1 Rabbit pAb

货号: B19247

产品信息

反应	Human,Mouse,Rat
宿主	Rabbit
克隆性	Polyclonal
预测反应	
应用	WB
推荐浓度	WB: 1:500 - 1:2000
理论分子量	66kDa
实测分子量	70kDa
形式	Liquid
保存条件	Store at -20°C. Avoid freeze / thaw cycles. Buffer: PBS with 0.02% sodium azide,50% glycerol,pH7.3.
偶联物	Unconjugated
阳性对照	Mouse testis,Mouse eye,Rat testis,SW480
细胞定位	Cytoplasm,Nucleus
纯化	Affinity purification

抗原信息

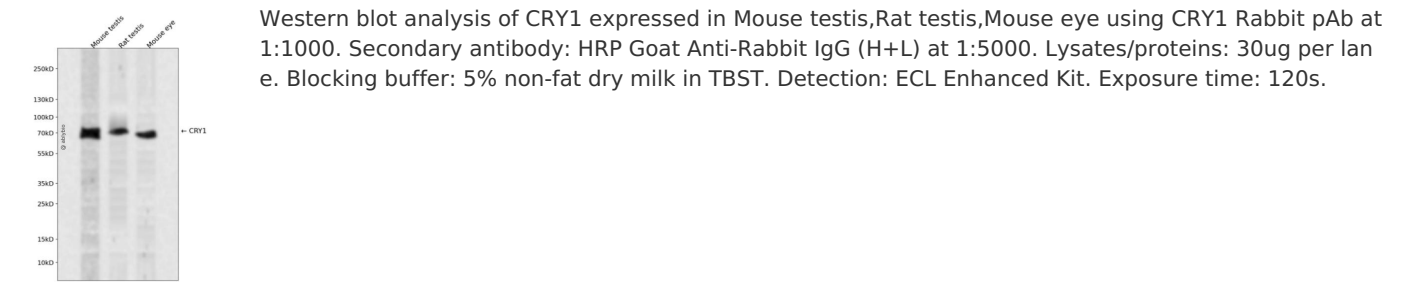
抗原信息	Recombinant fusion protein containing a sequence corresponding to amino acids 1-255 of human CRY1 (NP_004066.1).
序列	MGVNAVHWFRKGLRLHDNPALKECIQGADTIRCVYILDPWFAGSSNVGINRWRFLQCLELDANLRKLNSRLFVIRGQP ADVFPRLFKEWNITKLSIEYDSEPFGERDAAIKKLATEAGVEVIVRISHTLYDLDKIIELNNGGQPPLTYKRFQTLISKMEPLEIP VETITSEVIEKCTTPLSDDHDEKYGVPSLEELGFDTDGLSSAVWPGGETEALTRLERHLERKAWVANFERPRMNANSLLAS PTGLSPYL

靶点信息

研究背景	This gene encodes a flavin adenine dinucleotide-binding protein that is a key component of the circadian core oscillator complex, which regulates the circadian clock. This gene is upregulated by CLOCK/ARNTL heterodimers but then represses this upregulation in a feedback loop using PER/CRY heterodimers to interact with CLOCK/ARNTL. Polymorphisms in this gene have been associated with altered sleep patterns. The encoded protein is widely conserved across plants and animals. Loss of the related gene in mouse results in a shortened circadian cycle in complete darkness.
------	---

基因ID	1407
基因名	CRY1
Swiss	Q16526
别名	CRY1;PHLL1;DSPD

产品验证



实验步骤

访问官网浏览详情: www.ablybio.cn