

CLCA1 Rabbit pAb

货号: B18666

产品信息

反应	Human,Mouse,Rat
宿主	Rabbit
克隆性	Polyclonal
预测反应	
应用	WB IHC IF/ICC
推荐浓度	WB: 1:500 - 1:2000 IHC: 1:50 - 1:100 IF/ICC: 1:50 - 1:100
理论分子量	100kDa
实测分子量	85kDa
形式	Liquid
保存条件	Store at -20°C. Avoid freeze / thaw cycles. Buffer: PBS with 0.01% thiomersal,50% glycerol,pH7.3.
偶联物	Unconjugated
阳性对照	mouse uterus, rat small intestine
细胞定位	Cell membrane, Extracellular side, Peripheral membrane protein, Secreted, extracellular space
纯化	Affinity purification

抗原信息

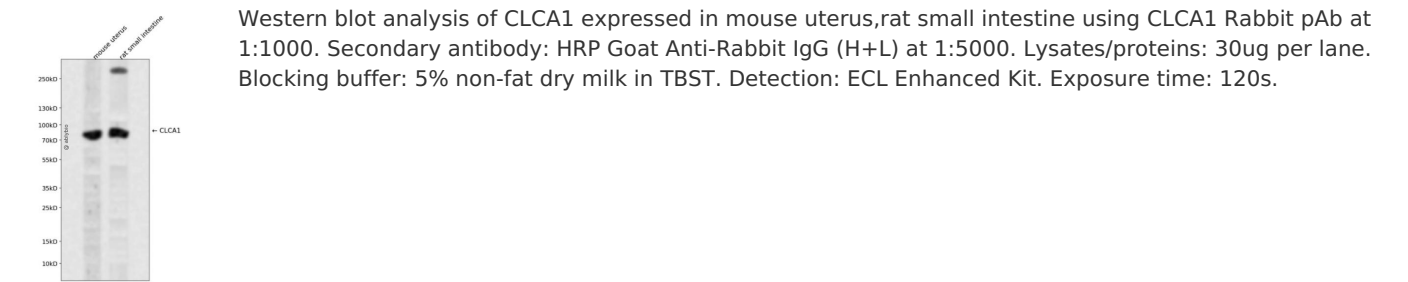
抗原信息	Recombinant fusion protein containing a sequence corresponding to amino acids 22-150 of human CLCA1 (NP_001276.2).
序列	NSLIQLNNGYEGIVVAIDPNVPEDETLIQIKDMVTQASLYLFEATGKRFYFKNVAILIPETWTKADYVRPKLETYKNADV VAESTPPGNDPEYTEQMGNCGEKGERIHLTPDFIAGKKLAEYGPQ

靶点信息

研究背景	This gene encodes a member of the calcium sensitive chloride conductance protein family. To date, all members of this gene family map to the same region on chromosome 1p31-p22 and share a high degree of homology in size, sequence, and predicted structure, but differ significantly in their tissue distributions. The encoded protein is expressed as a precursor protein that is processed into two cell-surface-associated subunits, although the site at which the precursor is cleaved has not been precisely determined. The encoded protein may be involved in mediating calcium-activated chloride conductance in the intestine.
------	---

基因ID	1179
基因名	CLCA1
Swiss	A8K7I4
别名	CLCA1;CACC;CACC1;CLCRG1;CaCC-1;GOB5;hCLCA1;hCaCC-1

产品验证



实验步骤

访问官网浏览详情: www.ablybio.cn