

CEBP Delta/CEBPD Rabbit pAb

货号: B18551

产品信息

反应	Mouse
宿主	Rabbit
克隆性	Polyclonal
预测反应	
应用	WB
推荐浓度	WB: 1:500 - 1:1000
理论分子量	28kDa
实测分子量	28KDa
形式	Liquid
保存条件	Store at -20°C. Avoid freeze / thaw cycles. Buffer: PBS with 0.05% proclin300,50% glycerol,pH7.3.
偶联物	Unconjugated
阳性对照	RAW264.7,Mouse brain
细胞定位	Nucleus
纯化	Affinity purification

抗原信息

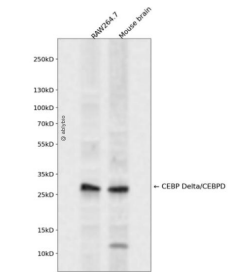
抗原信息	A synthetic peptide corresponding to a sequence within amino acids 50-150 of human CEBP Delta/CEBPD (NP_005186.2).
序列	PAMYDDESAIDFSAYIDSMAAVPTLELCHDELFADLFNSNHKAGGAGPLELLPGGPARPLGPGPAAPRLLKREPDWGDGD APGSLLPAQVAACAQTVVSLA

靶点信息

研究背景	The protein encoded by this intronless gene is a bZIP transcription factor which can bind as a homodimer to certain DNA regulatory regions. It can also form heterodimers with the related protein CEBP-alpha. The encoded protein is important in the regulation of genes involved in immune and inflammatory responses, and may be involved in the regulation of genes associated with activation and/or differentiation of macro phages. The cytogenetic location of this locus has been reported as both 8p11 and 8q11.
基因ID	1052

基因名	CEBPD
Swiss	P49716
别名	CEBPD;C/EBP-delta;CELF;CRP3;NF-IL6-beta

产品验证



Western blot analysis of CEBP Delta/CEBPD expressed in RAW264.7, Mouse brain using CEBP Delta/CEBPD Rabbit pAb at 1:1000. Secondary antibody: HRP Goat Anti-Rabbit IgG (H+L) at 1:5000. Lysates/proteins: 30ug per lane. Blocking buffer: 5% non-fat dry milk in TBST. Detection: ECL Enhanced Kit. Exposure time: 120s.

实验步骤

访问官网浏览详情: www.ablybio.cn