

GIT2 Rabbit pAb

货号: B18480

产品信息

反应	Human
宿主	Rabbit
克隆性	Polyclonal
预测反应	
应用	WB
推荐浓度	WB: 1:200 - 1:2000
理论分子量	52kDa, 70-84kDa
实测分子量	84kDa
形式	Liquid
保存条件	Store at -20°C. Avoid freeze / thaw cycles. Buffer: PBS with 0.01% thiomersal,50% glycerol,pH7.3.
偶联物	Unconjugated
阳性对照	A-431,LO2,Jurkat,HeLa
细胞定位	nucleoplasm,presynapse,synapse
纯化	Affinity purification

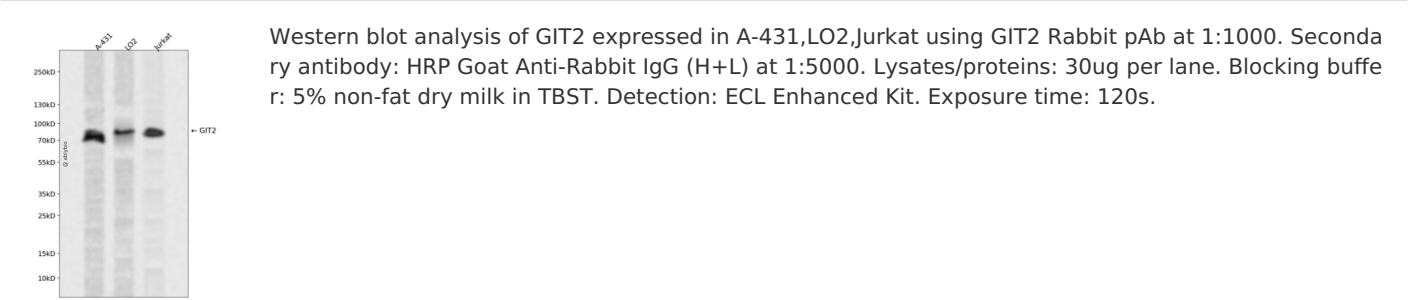
抗原信息

抗原信息	Recombinant fusion protein containing a sequence corresponding to amino acids 450-510 of human GIT2 (NP_476511.1).
序列	ASRLEKQNSTPESDYDNTPNDEPDGMGSSRKGRQRSMVWPGDGLVPDTAEPHVAPSPTLP

靶点信息

研究背景	This gene encodes a member of the GIT protein family, which interact with G protein-coupled receptor kinases and possess ADP-ribosylation factor (ARF) GTPase-activating protein (GAP) activity. GIT proteins traffic between cytoplasmic complexes, focal adhesions, and the cell periphery, and interact with Pak interacting exchange factor beta (PIX) to form large oligomeric complexes that transiently recruit other proteins. GIT proteins regulate cytoskeletal dynamics and participate in receptor internalization and membrane trafficking. This gene has been shown to repress lamellipodial extension and focal adhesion turnover, and is thought to regulate cell motility. This gene undergoes extensive alternative splicing to generate multiple isoforms, but the full-length nature of some of these variants has not been determined. The various isoforms have functional differences, with respect to ARF GAP activity and to G protein-coupled receptor kinase 2 binding.
基因ID	9815
基因名	GIT2
Swiss	Q14161
别名	GIT2;CAT-2;CAT2;PKL

产品验证



实验步骤

访问官网浏览详情: www.ablybio.cn