

CHAC1 Rabbit pAb

货号: **B18327**

产品信息

反应	Mouse
宿主	Rabbit
克隆性	Polyclonal
预测反应	
应用	WB
推荐浓度	WB: 1:500 - 1:1000
理论分子量	23kDa/28kDa
实测分子量	38KDa
形式	Liquid
保存条件	Store at -20°C. Avoid freeze / thaw cycles. Buffer: PBS with 0.05% proclin300,50% glycerol,pH7.3.
偶联物	Unconjugated
阳性对照	Mouse stomach
细胞定位	Cytoplasm,Golgi apparatus,cytosol,trans-Golgi network
纯化	Affinity purification

抗原信息

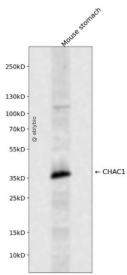
抗原信息	Recombinant fusion protein containing a sequence corresponding to amino acids 31-222 of human CHAC 1 (NP_077016.3).
序列	QALWIFGYGSLVWRPDFAYSDSRVGFVRGYSRRFWQGDTFHRGSDKMPGRVVTLLLEDHEGCTWGVAYVQVQGEQVSK ALKYLVNREAVLGGYDTKEVTFYPQDAPDQPLKALAYVATPQNPGYLGPAPEEAIATQILACRFGSGHNLEYLLRLADFMQL CGPQAQDEHLAAIVDAVGTMLPCFCPTEQALALV

靶点信息

研究背景	This gene encodes a member of the gamma-glutamylcyclotransferase family of proteins. The encoded protein has been shown to promote neuronal differentiation by deglycosylation of the Notch receptor, which prevents receptor maturation and inhibits Notch signaling. This protein may also play a role in the unfolded protein response, and in regulation of glutathione levels and oxidative balance in the cell. Elevated expression of this gene may indicate increased risk of cancer recurrence among breast and ovarian cancer patients. [provided by RefSeq, Sep 2016]
------	--

基因ID	79094
基因名	CHAC1
Swiss	Q9BUX1
别名	CHAC1

产品验证



Western blot analysis of CHAC1 expressed in Mouse stomach using CHAC1 Rabbit pAb at 1:1000. Secondary antibody: HRP Goat Anti-Rabbit IgG (H+L) at 1:5000. Lysates/proteins: 30ug per lane. Blocking buffer: 5% non-fat dry milk in TBST. Detection: ECL Enhanced Kit. Exposure time: 120s.

实验步骤

访问官网浏览详情: www.ablybio.cn