

SUMO3 Rabbit pAb

货号: B18270

产品信息

反应	Human,Mouse,Rat
宿主	Rabbit
克隆性	Polyclonal
预测反应	
应用	WB IF/ICC
推荐浓度	WB: 1:500 - 1:2000 IF/ICC: 1:50 - 1:200
理论分子量	11kDa/15kDa
实测分子量	17-50kDa
形式	Liquid
保存条件	Store at -20°C. Avoid freeze / thaw cycles. Buffer: PBS with 0.01% thiomersal,50% glycerol,pH7.3.
偶联物	Unconjugated
阳性对照	U-87MG,LO2,293T,Mouse liver,Mouse kidney,Mouse small intestine,Mouse heart,Rat liver,Rat heart
细胞定位	Cytoplasm,Nucleus,PML body
纯化	Affinity purification

抗原信息

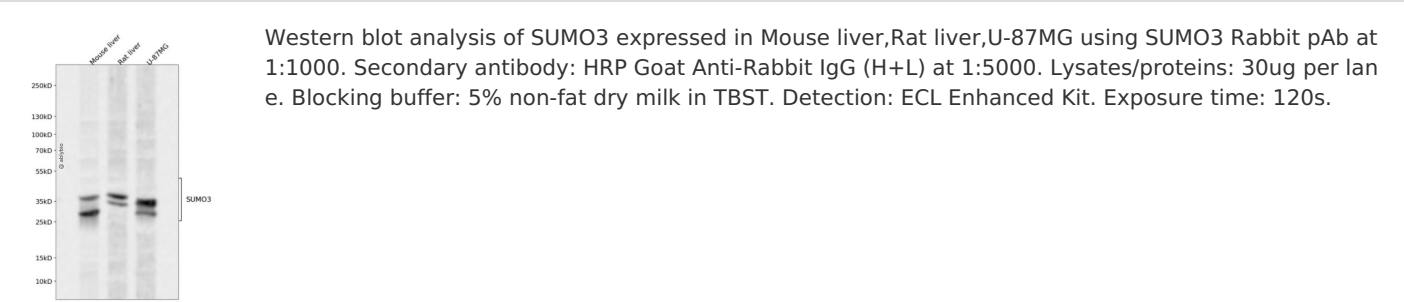
抗原信息	Recombinant fusion protein containing a sequence corresponding to amino acids 1-92 of human SUMO3 (NP_008867.2).
序列	MSEEEKPEGVKTENDHINLKVAGQDGSVVQFKIKRHTPLSKLMKAYCERQGGLSMRQIRFRFDGQPINETDTPAQLEMEDE DTIDVFQQTGG

靶点信息

研究背景	This gene encodes a member of the small ubiquitin-related modifier (SUMO) family of eukaryotic proteins. The encoded protein is covalently conjugated to other proteins via a post-translation modification known as sumoylation. Sumoylation may play a role in a wide variety of cellular processes, including nuclear transport, DNA replication and repair, mitosis, transcriptional regulation, and signal transduction. Alternatively spliced transcript variants encoding distinct proteins have been described.
------	---

基因ID	6612
基因名	SUMO3
Swiss	P55854
别名	SUMO3;SMT3A;SMT3H1;SUMO-3;Smt3B

产品验证



实验步骤

访问官网浏览详情: www.ablybio.cn