

# POLR3C Rabbit pAb

货号: B18228

产品信息

反应	Human,Mouse,Rat
宿主	Rabbit
克隆性	Polyclonal
预测反应	
应用	WB
推荐浓度	<b>WB:</b> 1:500 - 1:2000
理论分子量	60kDa
实测分子量	63kDa
形式	Liquid
保存条件	Store at -20°C. Avoid freeze / thaw cycles. Buffer: PBS with 0.01% thiomersal,50% glycerol,pH7.3.
偶联物	Unconjugated
阳性对照	Rat ovary
细胞定位	Nucleus
纯化	Affinity purification

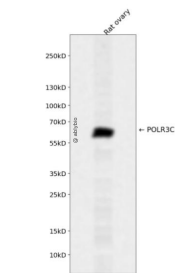
抗原信息

抗原信息	Recombinant fusion protein containing a sequence corresponding to amino acids 1-270 of human POLR3C (NP_006459.3).
序列	MTQAEIKLCSLLQEHFGEIVEKIGVHLIRTGSQPLRVIAHDTGTSLDQVKKALCVLVQHNLVSYQVHKRGVVEYEAQCSRVLRLRYPRYIYTTKTLYSDTGELIVEELLNGKLTMSAVVKKVADRLTETMEDGKTMDYAEVSNTFVRLADTHFVQRCPSVPTTENSDPGPPPPAPTLVINEKDMYLVPKLSLIGKGKRRRSSDEDAAGEPKAKRPKYTTDNKEPIPDDGIYWQANLDRFHQHFRDQAIVSAVANRMDQTSSEIVRTM

靶点信息

研究背景	DNA-dependent RNA polymerase catalyzes the transcription of DNA into RNA using the four ribonucleoside triphosphates as substrates. Specific core component of RNA polymerase III which synthesizes small RNAs, such as 5S rRNA and tRNAs. May direct with other members of the subcomplex RNA Pol III binding to the TFIIIB-DNA complex via the interactions between TFIIIB and POLR3F. May be involved either in the recruitment and stabilization of the subcomplex within RNA polymerase III, or in stimulating catalytic functions of other subunits during initiation. Plays a key role in sensing and limiting infection by intracellular bacteria and DNA viruses. Acts as nuclear and cytosolic DNA sensor involved in innate immune response. Can sense non-self dsDNA that serves as template for transcription into dsRNA. The non-self RNA polymerase III transcripts, such as Epstein-Barr virus-encoded RNAs (EBERs) induce type I interferon and NF- Kappa-B through the RIG-I pathway. Preferentially binds single-stranded DNA (ssDNA) in a sequence-independent manner.
基因ID	10623
基因名	POLR3C
Swiss	Q9BUI4
别名	POLR3C;RPC3;RPC62

产品验证



Western blot analysis of POLR3C expressed in Rat ovary using POLR3C Rabbit pAb at 1:1000. Secondary antibody: HRP Goat Anti-Rabbit IgG (H+L) at 1:5000. Lysates/proteins: 30ug per lane. Blocking buffer: 5% non-fat dry milk in TBST. Detection: ECL Enhanced Kit. Exposure time: 120s.

实验步骤

访问官网浏览详情: [www.ablybio.cn](http://www.ablybio.cn)