

PACRG Rabbit pAb

货号: B18099

产品信息

| | |
|-------|--|
| 反应 | Human,Mouse,Rat |
| 宿主 | Rabbit |
| 克隆性 | Polyclonal |
| 预测反应 | |
| 应用 | WB |
| 推荐浓度 | WB: 1:500 - 1:2000 |
| 理论分子量 | 29kDa/33kDa |
| 实测分子量 | 35kDa |
| 形式 | Liquid |
| 保存条件 | Store at -20°C. Avoid freeze / thaw cycles. Buffer: PBS with 0.01% thiomersal,50% glycerol,pH7.3. |
| 偶联物 | Unconjugated |
| 阳性对照 | 293T,A-549,BxPC-3,Raji,Mouse testis,Mouse lung,Rat testis |
| 细胞定位 | cytosol,neuron projection,nucleus |
| 纯化 | Affinity purification |

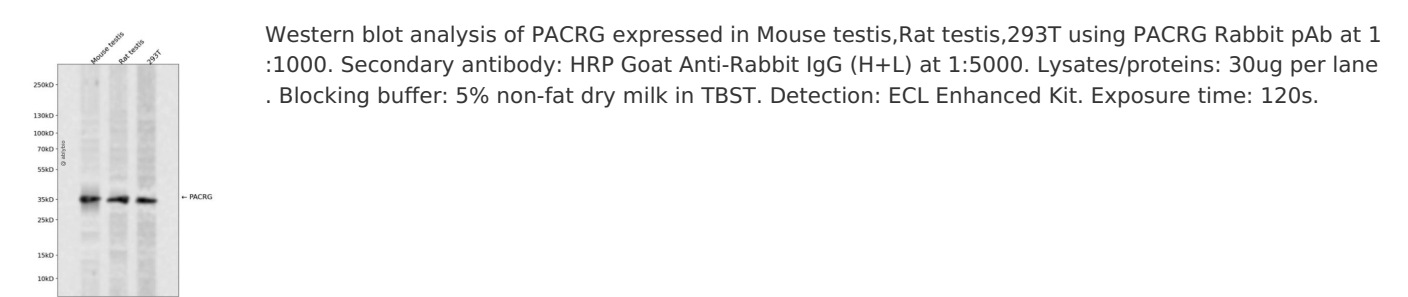
抗原信息

| | |
|------|---|
| 抗原信息 | A synthetic peptide corresponding to a sequence within amino acids 150-250 of human PACRG (NP_001073847.1). |
| 序列 | IPIKNALNLRNRQVICVTLKVLQHLVVSAEMVGKALVPYYRQILPVLNIFKNMNVNSGDGIDYSQQKRENIGDLIQETLEAFE RYGGENAFINIKYVVPT |

靶点信息

| | |
|-------|--|
| 研究背景 | This gene encodes a protein that is conserved across metazoans. In vertebrates, this gene is linked in a head-to-head arrangement with the adjacent parkin gene, which is associated with autosomal recessive juvenile Parkinson's disease. These genes are co-regulated in various tissues and they share a bi-directional promoter. Both genes are associated with susceptibility to leprosy. The parkin co-regulated gene protein forms a large molecular complex with chaperones, including heat shock proteins 70 and 90, and chaperonin components. This protein is also a component of Lewy bodies in Parkinson's disease patients, and it suppresses unfolded Pael receptor-induced neuronal cell death. Multiple transcript variants encoding different isoforms have been found for this gene. |
| 基因ID | 135138 |
| 基因名 | PACRG |
| Swiss | Q96M98 |
| 别名 | PACRG;GLUP;HAK005771;PARK2CRG |

产品验证



实验步骤

访问官网浏览详情: www.ablybio.cn