

LHX8 Rabbit pAb

货号: B17874

产品信息

反应	Mouse,Rat
宿主	Rabbit
克隆性	Polyclonal
预测反应	
应用	WB
推荐浓度	WB: 1:500 - 1:2000
理论分子量	38kDa/39kDa
实测分子量	39kDa
形式	Liquid
保存条件	Store at -20°C. Avoid freeze / thaw cycles. Buffer: PBS with 0.02% sodium azide,50% glycerol,pH7.3.
偶联物	Unconjugated
阳性对照	Mouse brain,Mouse testis,Mouse ovary,Rat brain
细胞定位	Nucleus
纯化	Affinity purification

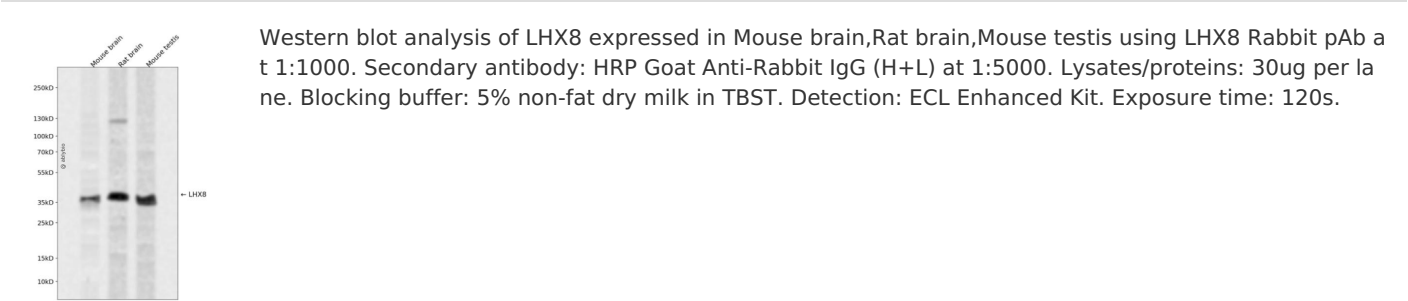
抗原信息

抗原信息	Recombinant fusion protein containing a sequence corresponding to amino acids 1-220 of human LHX8 (NP_001001933.1).
序列	MQILSRCQGLMSEECGRTTALAAGRTRKGAGEGLVSPEGAGDEDESCSSSAPLSPSSSPRSMASGSGCPPGKCVCNSC GLEIVDKYLLKVNDLCWHVRCLSCSVCRTSLGRHTSCYIKDKDIFCKLDYFRRYGTRCSRCGRHIHSTDWVRRAKGNVYHL ACFACFCKRQLSTGEEFALVEEKVLCRVHYDCMLDNLKREVENGNGISVEGALLTEQDVN

靶点信息

研究背景	The protein encoded by this gene is a member of the LIM homeobox family of proteins, which are involved in patterning and differentiation of various tissue types. These proteins contain two tandemly repeated cysteine-rich double-zinc finger motifs known as LIM domains, in addition to a DNA-binding homeodomain. This family member is a transcription factor that plays a role in tooth morphogenesis. It is also involved in oogenesis and in neuronal differentiation. This gene is a candidate gene for cleft palate, and it is also associated with odontoma formation. Alternative splicing of this gene results in multiple transcript variants.
基因ID	431707
基因名	LHX8
Swiss	Q68G74
别名	LHX8;LHX7

产品验证



实验步骤

访问官网浏览详情: www.ablybio.cn