

Phospho-INSR-Y1146/IGF1R-Y1131 Rabbit pAb

货号: B17772

产品信息

反应	Human
宿主	Rabbit
克隆性	Polyclonal
预测反应	
应用	WB
推荐浓度	WB: 1:500 - 1:2000
理论分子量	155kDa
实测分子量	95kDa
形式	Liquid
保存条件	Store at -20°C. Avoid freeze / thaw cycles. Buffer: PBS with 0.01% thiomersal,50% glycerol,pH7.3.
偶联物	Unconjugated
阳性对照	293T,HeLa
细胞定位	Cell membrane,Single-pass type I membrane protein
纯化	Affinity purification

抗原信息

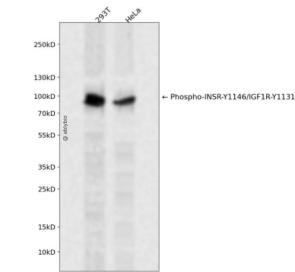
抗原信息	A synthetic phosphorylated peptide around Y1146 of human IGF1RINSR (NP_000199.2).
序列	DIYET

靶点信息

研究背景	This gene encodes a member of the receptor tyrosine kinase family of proteins. The encoded preproprote in is proteolytically processed to generate alpha and beta subunits that form a heterotetrameric receptor. Binding of insulin or other ligands to this receptor activates the insulin signaling pathway, which regulate s glucose uptake and release, as well as the synthesis and storage of carbohydrates, lipids and protein. M utations in this gene underlie the inherited severe insulin resistance syndromes including type A insulin re sistance syndrome, Donohue syndrome and Rabson-Mendenhall syndrome. Alternative splicing results in multiple transcript variants. [provided by RefSeq, Oct 2015]
基因ID	3643,3480

基因名	INSR,IGF1R
Swiss	P06213,P08069
别名	INSR/IGF1R

产品验证



Western blot analysis of Phospho-INSR-Y1146/IGF1R-Y1131 expressed in 293T,HeLa using Phospho-INSR-Y1146/IGF1R-Y1131 Rabbit pAb at 1:1000. Secondary antibody: HRP Goat Anti-Rabbit IgG (H+L) at 1:5000. Lysates/proteins: 30ug per lane. Blocking buffer: 5% non-fat dry milk in TB ST. Detection: ECL Enhanced Kit. Exposure time: 120s.

实验步骤

访问官网浏览详情: www.ablybio.cn