

NPB Rabbit pAb

货号: B17758

产品信息

反应	Human,Mouse
宿主	Rabbit
克隆性	Polyclonal
预测反应	
应用	WB IF/ICC
推荐浓度	WB: 1:500 - 1:2000 IF/ICC: 1:50 - 1:200
理论分子量	13kDa
实测分子量	13kDa
形式	Liquid
保存条件	Store at -20°C. Avoid freeze / thaw cycles. Buffer: PBS with 0.01% thiomersal,50% glycerol,pH7.3.
偶联物	Unconjugated
阳性对照	SW480,Mouse brain
细胞定位	Secreted
纯化	Affinity purification

抗原信息

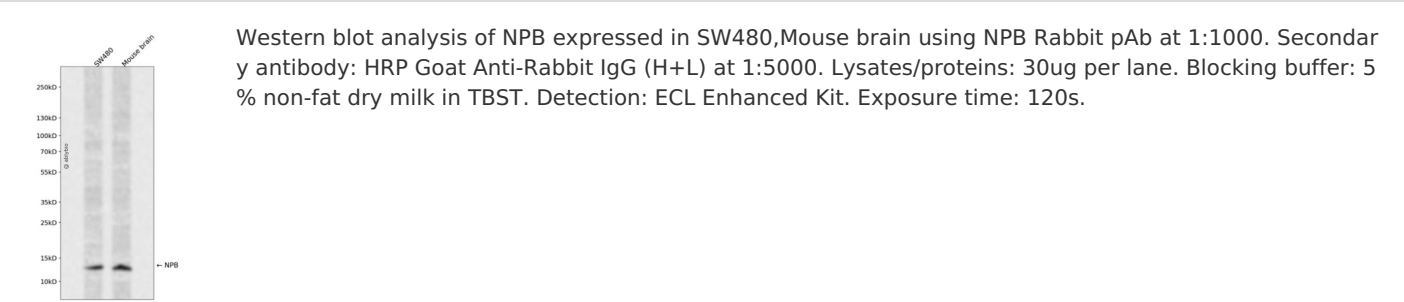
抗原信息	Recombinant fusion protein containing a sequence corresponding to amino acids 1-125 of human NPB (NP_683694.1).
序列	MARSATLAAAALALCLLLAPPGLAWYKPAAGHSSYSVGRAAGLLSGLRRSPYARRSQPYRGAEPGGAGASPELQLHPRL RSLAVCVQDVAPNLQRCERLPDGRGTYQCKANVFLSLRAADCLAA

靶点信息

研究背景	This gene encodes a member of the neuropeptide B/W family of proteins and preproprotein that is proteolytically processed to generate multiple protein products. The encoded products include neuropeptide B-23 and a C-terminally extended form, neuropeptide B-29, which are characterized by an N-terminal brominated tryptophan amino acid. Both of the encoded peptides bind with higher affinity to neuropeptide B/W (NPB/W) receptor 1 compared to the related NPB/W receptor 2. These peptides may regulate feeding, pain perception, and stress in rodents.
------	--

基因ID	256933
基因名	NPB
Swiss	Q8NG41
别名	NPB;L7;PPL7;PPNPB

产品验证



实验步骤

访问官网浏览详情: www.ablybio.cn