

RBMY1F Rabbit pAb

货号: B17753

产品信息

| | |
|-------|--|
| 反应 | Rat |
| 宿主 | Rabbit |
| 克隆性 | Polyclonal |
| 预测反应 | |
| 应用 | WB |
| 推荐浓度 | WB: 1:500 - 1:2000 |
| 理论分子量 | 47kDa/55kDa |
| 实测分子量 | 56kDa |
| 形式 | Liquid |
| 保存条件 | Store at -20°C. Avoid freeze / thaw cycles. Buffer: PBS with 0.01% thiomersal,50% glycerol,pH7.3. |
| 偶联物 | Unconjugated |
| 阳性对照 | Rat kidney |
| 细胞定位 | Nucleus |
| 纯化 | Affinity purification |

抗原信息

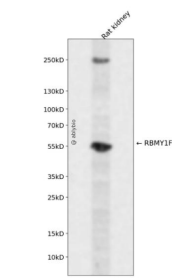
| | |
|------|---|
| 抗原信息 | Recombinant fusion protein containing a sequence corresponding to amino acids 1-80 of human RBMY1F (NP_689798.1). |
| 序列 | MVEADHPGKLFIGGLNRETNEKMLKAVFGKHGPISEVLLIKDRTSKSRGFAFITFENPADAKNAAKDMNGTSLHGKAIKV |

靶点信息

| | |
|------|--|
| 研究背景 | This gene encodes a protein containing an RNA-binding motif in the N-terminus and four SRGY (serine, ar ginine, glycine, tyrosine) boxes in the C-terminus. Multiple copies of this gene are found in the AZFb azoo spermia factor region of chromosome Y and the encoded protein is thought to be involved in spermatoge nesis. Most copies of this locus are pseudogenes, although six highly similar copies have full-length ORFs and are considered functional. Four functional copies of this gene are found within inverted repeat IR2; tw o functional copies of this gene are found in palindrome P3, along with two copies of PTPN13-like, Y-linked . |
|------|--|

| | |
|-------|---|
| 基因ID | 159163 |
| 基因名 | |
| Swiss | Q15415 |
| 别名 | RBMY1F;YRRM2;RNA binding motif protein;Y-linked;family 1;member F |

产品验证



Western blot analysis of RBMY1F expressed in Rat kidney using RBMY1F Rabbit pAb at 1:1000. Secondary antibody: HRP Goat Anti-Rabbit IgG (H+L) at 1:5000. Lysates/proteins: 30ug per lane. Blocking buffer: 5% non-fat dry milk in TBST. Detection: ECL Enhanced Kit. Exposure time: 120s.

实验步骤

访问官网浏览详情: www.ablybio.cn