

# FREM1 Rabbit pAb

货号: B17752

产品信息

反应	Human,Mouse,Rat
宿主	Rabbit
克隆性	Polyclonal
预测反应	
应用	WB
推荐浓度	<b>WB:</b> 1:500 - 1:2000
理论分子量	25kDa/42kDa/80kDa/244kDa
实测分子量	72kDa
形式	Liquid
保存条件	Store at -20°C. Avoid freeze / thaw cycles. Buffer: PBS with 0.01% thiomersal,50% glycerol,pH7.3.
偶联物	Unconjugated
阳性对照	293T,K-562,HepG2,Mouse kidney,Mouse liver,Rat liver
细胞定位	Secreted,basement membrane,extracellular matrix,extracellular space
纯化	Affinity purification

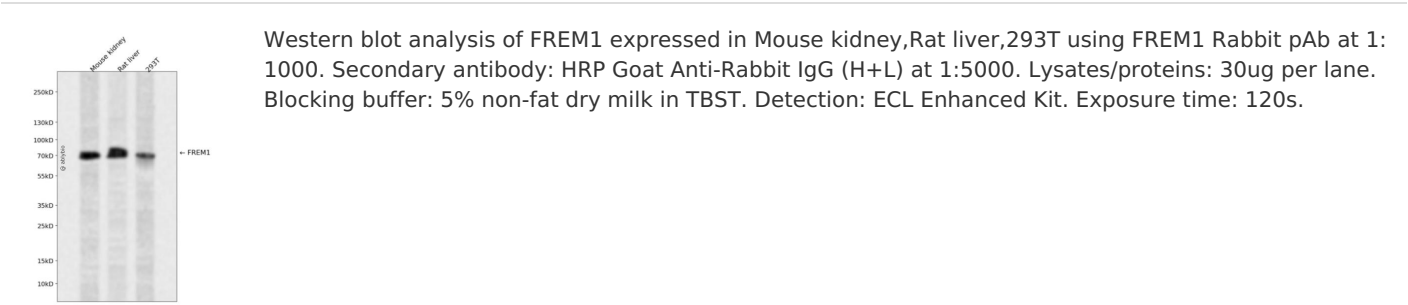
抗原信息

抗原信息	Recombinant fusion protein containing a sequence corresponding to amino acids 1880-2179 of human FREM1 (NP_659403.4).
序列	GSSSSTTSGSFHLERRPLPSSMQLAVIRGDTLRGFDSTDLSQRKLRTRGNGKTVRPSSVYRNGTDIIYNYHGIVSLKLEDD SFPTHKRKAKVSIISQPQKTIKVAELPQADKVESTTDSHFPRQDQLPSFPKNCTLELKGLFHFEEGIQKLYQCNGIAWKAWS PQTKDVEDKSCPAGWHQHSGYCHILITEQKGTWNAAAQACREQYLGNLVTVFSRQHMRWLWDIGGRKSFWIGLNDQV HAGHWEWIGGEPVAFTNGRRGPSQRSKLGKSCVLVQRQGWQTKDCRRAKPHNYVCSRKL

靶点信息

研究背景	This gene encodes a basement membrane protein that may play a role in craniofacial and renal development. Mutations in this gene have been associated with bifid nose with or without anorectal and renal anomalies. Alternatively spliced transcript variants encoding different isoforms have been described. PubMed ID 19940113 describes one such variant that initiates transcription within a distinct, internal exon; the resulting shorter isoform (named Toll-like/interleukin-1 receptor regulator, TILRR) is suggested to be a co-receptor of the interleukin 1 receptor family and may regulate receptor function and Toll-like receptor/interleukin 1 receptor signal transduction, contributing to the control of inflammatory response activation.
基因ID	158326
基因名	FREM1
Swiss	Q5H8C1
别名	FREM1;BNAR;C9orf143;C9orf145;C9orf154;MOTA;TILRR;TRIGNO2

产品验证



实验步骤

访问官网浏览详情: [www.ablybio.cn](http://www.ablybio.cn)