

COLGALT1 Rabbit pAb

货号: **B17729**

产品信息

反应	Human,Mouse,Rat
宿主	Rabbit
克隆性	Polyclonal
预测反应	
应用	WB IF/ICC
推荐浓度	WB: 1:500 - 1:1000 IF/ICC: 1:50 - 1:200
理论分子量	71kDa
实测分子量	72KDa
形式	Liquid
保存条件	Store at -20°C. Avoid freeze / thaw cycles. Buffer: PBS with 0.05% proclin300,50% glycerol,pH7.3.
偶联物	Unconjugated
阳性对照	Mouse ovary
细胞定位	Endoplasmic reticulum lumen
纯化	Affinity purification

抗原信息

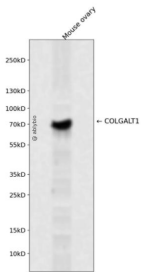
抗原信息	Recombinant fusion protein containing a sequence corresponding to amino acids 30-230 of human COLGALT1 (NP_078932.2).
序列	APPGADAYFPEERWSPESPLQAPRVLIALLARNAHALPTTLGALERLRHPRERTALWVATDHNMDNTSTVLREWLVAVKSLYHSVEWRPAEEPRSYDDEEGPKHWSDSRYEVMKLRQAALKSARDMWADYILFVDADNLILNPDTLSLLIAENKTVVAPMLDSRAAYSNFWCGMTSQGYKRTPAYIPIKRDRRGCF

靶点信息

研究背景	The protein encoded by this gene is one of two enzymes that transfers galactose moieties to hydroxylysine residues of collagen and mannose binding lectin. This gene is constitutively expressed and encodes a soluble protein that localizes to the endoplasmic reticulum.
基因ID	79709

基因名	COLGALT1
Swiss	Q8NBJ5
别名	COLGALT1;GLT25D1

产品验证



Western blot analysis of COLGALT1 expressed in Mouse ovary using COLGALT1 Rabbit pAb at 1:1000. Secondary antibody: HRP Goat Anti-Rabbit IgG (H+L) at 1:5000. Lysates/proteins: 30ug per lane. Blocking buffer: 5% non-fat dry milk in TBST. Detection: ECL Enhanced Kit. Exposure time: 120s.

实验步骤

访问官网浏览详情: www.ablybio.cn