

# CYSLTR2 Rabbit pAb

货号: B17717

## 产品信息

反应	Mouse
宿主	Rabbit
克隆性	Polyclonal
预测反应	
应用	WB
推荐浓度	<b>WB:</b> 1:500 - 1:2000
理论分子量	39kDa
实测分子量	40kDa
形式	Liquid
保存条件	Store at -20°C. Avoid freeze / thaw cycles. Buffer: PBS with 0.01% thiomersal,50% glycerol,pH7.3.
偶联物	Unconjugated
阳性对照	mouse kidney
细胞定位	Cell membrane,Multi-pass membrane protein
纯化	Affinity purification

## 抗原信息

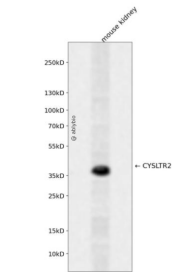
抗原信息	A synthetic peptide corresponding to a sequence within amino acids 200 to the C-terminus of human CYS LTR2 (NP_001295394.1).
序列	TMNYIALVVGCLLPFFTLSCYLLIIRVLLKVEVPESGLRVSHRKALTTIIITLIIFFLCFLPYHTLRTVHLTTWKVGLCKDRLHKAL VITLALAAANACFNPLLYFAGENFKDRLKSALRKGHPQKAKTKCVFPVSVWLRKETRV

## 靶点信息

研究背景	The cysteinyl leukotrienes LTC4, LTD4, and LTE4 are important mediators of human bronchial asthma. Ph armacologic studies have determined that cysteinyl leukotrienes activate at least 2 receptors, the protein encoded by this gene and CYSLTR1. This encoded receptor is a member of the superfamily of G protein-co upled receptors. It seems to play a major role in endocrine and cardiovascular systems.
基因ID	57105

基因名	CYSLTR2
Swiss	Q9NS75
别名	CYSLTR2;CYSLT2;CYSLT2R;GPCR21;HG57;HPN321;KPG_011;PSEC0146;hGPCR21

产品验证



Western blot analysis of CYSLTR2 expressed in mouse kidney using CYSLTR2 Rabbit pAb at 1:1000. Secondary antibody: HRP Goat Anti-Rabbit IgG (H+L) at 1:5000. Lysates/proteins: 30ug per lane. Blocking buffer: 5% non-fat dry milk in TBST. Detection: ECL Enhanced Kit. Exposure time: 120s.

实验步骤

访问官网浏览详情: [www.ablybio.cn](http://www.ablybio.cn)