

# SLC2A8 Rabbit pAb

货号: **B17689**

## 产品信息

反应	Mouse,Rat
宿主	Rabbit
克隆性	Polyclonal
预测反应	
应用	WB
推荐浓度	<b>WB:</b> 1:500 - 1:2000
理论分子量	50kDa
实测分子量	51kDa
形式	Liquid
保存条件	Store at -20°C. Avoid freeze / thaw cycles. Buffer: PBS with 0.01% thiomersal,50% glycerol,pH7.3.
偶联物	Unconjugated
阳性对照	Mouse testis,Mouse brain,Mouse heart,Rat testis
细胞定位	Cell membrane,Cytoplasmic vesicle membrane,Multi-pass membrane protein
纯化	Affinity purification

## 抗原信息

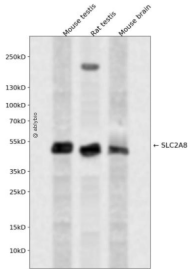
抗原信息	Recombinant fusion protein containing a sequence corresponding to amino acids 200-260 of human SLC2A8 (NP_055395.2).
序列	CFMPETPRFLLTQHRRQEAMAALRFLWGSEQGWEDPPIGAEQSFHLALLRQPGIYKPFIIIG

## 靶点信息

研究背景	This gene belongs to the solute carrier 2A family, which includes intracellular glucose transporters. Based on sequence comparison, the glucose transporters are grouped into three classes and this gene is a member of class II. The encoded protein, like other members of the family, contains several conserved residues and motifs and 12 transmembrane domains with both amino and carboxyl ends being on the cytosolic side of the membrane. Alternatively spliced transcript variants have been described for this gene.
基因ID	29988

基因名	SLC2A8
Swiss	Q9NY64
别名	SLC2A8;GLUT8;GLUTX1

## 产品验证



Western blot analysis of SLC2A8 expressed in Mouse testis,Rat testis,Mouse brain using SLC2A8 Rabbit pAb at 1:1000. Secondary antibody: HRP Goat Anti-Rabbit IgG (H+L) at 1:5000. Lysates/proteins: 30ug per lane. Blocking buffer: 5% non-fat dry milk in TBST. Detection: ECL Enhanced Kit. Exposure time: 12 0s.

## 实验步骤

访问官网浏览详情: [www.ablybio.cn](http://www.ablybio.cn)