

GLIPR1 Rabbit pAb

货号: B17667

产品信息

| | |
|-------|--|
| 反应 | Rat |
| 宿主 | Rabbit |
| 克隆性 | Polyclonal |
| 预测反应 | |
| 应用 | WB |
| 推荐浓度 | WB: 1:500 - 1:2000 |
| 理论分子量 | 26kDa/30kDa |
| 实测分子量 | 28kDa |
| 形式 | Liquid |
| 保存条件 | Store at -20°C. Avoid freeze / thaw cycles. Buffer: PBS with 0.01% thiomersal,50% glycerol,pH7.3. |
| 偶联物 | Unconjugated |
| 阳性对照 | Rat lung |
| 细胞定位 | Membrane,Single-pass membrane protein |
| 纯化 | Affinity purification |

抗原信息

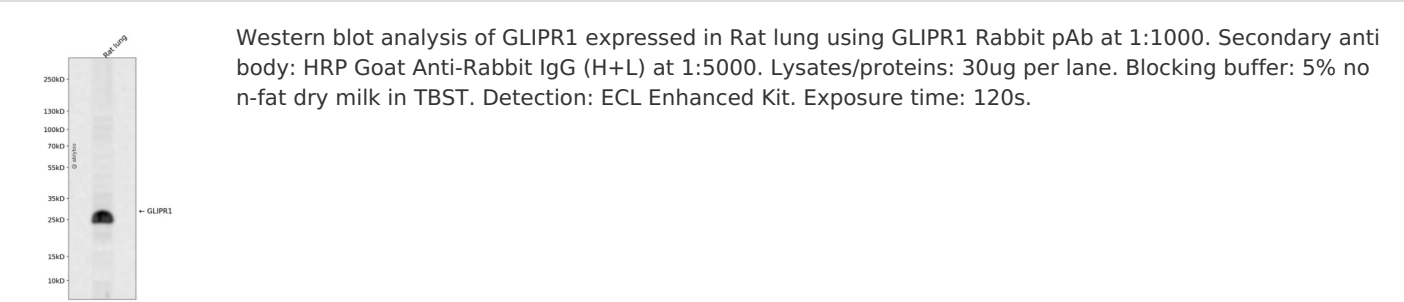
| | |
|------|--|
| 抗原信息 | Recombinant fusion protein containing a sequence corresponding to amino acids 22-140 of human GLIPR 1 (NP_006842.2). |
| 序列 | ANILPDIENEDFIKDCVRIHNKFRSEVKPTASDMLYMTWDPALAQIAKAWASNCQFSHNTRLKPPHKLHPNFTSLGENIWTGSVPIFSVSIAITNWDYDEIQDYDFKTRICKKVCGHYTQ |

靶点信息

| | |
|------|---|
| 研究背景 | This gene encodes a protein with similarity to both the pathogenesis-related protein (PR) superfamily and the cysteine-rich secretory protein (CRISP) family. Increased expression of this gene is associated with myelomocytic differentiation in macrophage and decreased expression of this gene through gene methylation is associated with prostate cancer. The protein has proapoptotic activities in prostate and bladder cancer cells. This gene is a member of a cluster on chromosome 12 containing two other similar genes. Alternatively spliced variants which encode different protein isoforms have been described; however, not all variants have been fully characterized. |
|------|---|

| | |
|-------|---------------------------|
| 基因ID | 11010 |
| 基因名 | GLIPR1 |
| Swiss | P48060 |
| 别名 | GLIPR1;CRISP7;GLIPR;RTVP1 |

产品验证



实验步骤

访问官网浏览详情: www.ablybio.cn