

UBE2E2 Rabbit pAb

货号: **B17639**

产品信息

反应	Mouse,Rat
宿主	Rabbit
克隆性	Polyclonal
预测反应	
应用	WB
推荐浓度	WB: 1:500 - 1:1000
理论分子量	22kDa
实测分子量	22KDa
形式	Liquid
保存条件	Store at -20°C. Avoid freeze / thaw cycles. Buffer: PBS with 0.01% thiomersal,50% glycerol,pH7.3.
偶联物	Unconjugated
阳性对照	Rat testis,Rat brain
细胞定位	nucleus
纯化	Affinity purification

抗原信息

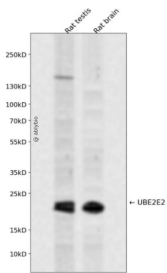
抗原信息	Recombinant fusion protein containing a sequence corresponding to amino acids 1-201 of human UBE2E2 (NP_689866.1).
序列	MSTEAQRVDDSPSTSGGSSDGDQRESVQEQPEREQVQPKKKEGKISSKTAAKLSTSAKRIQKELAEITLDPNCSAGPK GDNIYEWRTILGPPGSVYEGGVFFLDITFSPDYPPKPPKVTFRTRIIYHCNINSQGVICLDILKDNWSPALTISKVLLSICSLLT DCNPADPLVGSIAATQYMTNRAEHRMARQWTKRYAT

靶点信息

研究背景	Ube2E2 is an E2 enzyme, which is part of the E1, E2, and E3 cascade responsible for ubiquitination of protein substrates. It shares 96% identical amino acid sequence with Ube2E1 and Ube2E3 with the exception of the N-terminal extension that has little in common with the other two E2s. Ube2E2 interacts with ARA5 4 and RNF8. The RNF8/ Ube2E2 interaction is found to catalyze K48-linked poly-ubiquitination. Ube2E2 may play a role in ubiquitination and subsequent proteasomal degradation of the E3 Ub ligase Parkin.
------	--

基因ID	7325
基因名	UBE2E2
Swiss	Q96LR5
别名	UBE2E2;UBCH8

产品验证



Western blot analysis of UBE2E2 expressed in Rat testis, Rat brain using UBE2E2 Rabbit pAb at 1:1000. Secondary antibody: HRP Goat Anti-Rabbit IgG (H+L) at 1:5000. Lysates/proteins: 30ug per lane. Blocking buffer: 5% non-fat dry milk in TBST. Detection: ECL Enhanced Kit. Exposure time: 120s.

实验步骤

访问官网浏览详情: www.ablybio.cn