

OPCML Rabbit pAb

货号: B17455

产品信息

反应	Human,Mouse,Rat
宿主	Rabbit
克隆性	Polyclonal
预测反应	
应用	WB
推荐浓度	WB: 1:1000 - 1:2000
理论分子量	33kDa/37kDa/38kDa
实测分子量	38kDa
形式	Liquid
保存条件	Store at -20°C. Avoid freeze / thaw cycles. Buffer: PBS with 0.02% sodium azide,50% glycerol,pH7.3.
偶联物	Unconjugated
阳性对照	U-87MG,293T,HeLa,Mouse brain,Mouse pancreas,Mouse kidney,Rat brain,Rat pancreas,Rat kidney
细胞定位	Cell membrane,GPI-anchor,Lipid-anchor
纯化	Affinity purification

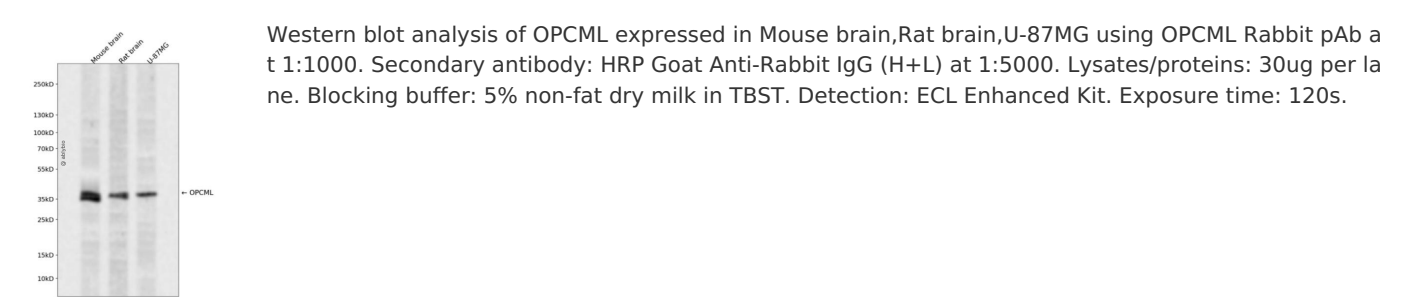
抗原信息

抗原信息	Recombinant fusion protein containing a sequence corresponding to amino acids 246-345 of human OPC ML (NP_002536.1).
序列	ASAVPMAEFQWFKEETRLATGLDGMRIENKGRMSTLTFFNVSEKDYGNYTCVATNKLGN TNASITLYGPGAVIDGVNSAS RALACLWLSGTLLAHFFIKF

靶点信息

研究背景	This gene encodes a member of the IgLON subfamily in the immunoglobulin protein superfamily of proteins. The encoded preprotein is proteolytically processed to generate the mature protein. This protein is localized in the plasma membrane and may have an accessory role in opioid receptor function. This gene has an ortholog in rat and bovine. The opioid binding-cell adhesion molecule encoded by the rat gene binds opioid alkaloids in the presence of acidic lipids, exhibits selectivity for mu ligands and acts as a GPI-anchored protein. Since the encoded protein is highly conserved in species during evolution, it may have a fundamental role in mammalian systems. Alternative splicing results in multiple transcript variants, at least one of which encodes an isoform that is proteolytically processed.
基因ID	4978
基因名	OPCML
Swiss	Q14982
别名	OPCML;IGLON1;OBCAM;OPCM

产品验证



实验步骤

访问官网浏览详情: www.ablybio.cn