

PGE receptor EP1 (PTGER1) Rabbit pAb

货号: B17425

产品信息

反应	Mouse
宿主	Rabbit
克隆性	Polyclonal
预测反应	
应用	WB
推荐浓度	WB: 1:500 - 1:2000
理论分子量	41kDa
实测分子量	42kDa
形式	Liquid
保存条件	Store at -20°C. Avoid freeze / thaw cycles. Buffer: PBS with 0.01% thiomersal,50% glycerol,pH7.3.
偶联物	Unconjugated
阳性对照	Mouse kidney
细胞定位	Cell membrane,Multi-pass membrane protein
纯化	Affinity purification

抗原信息

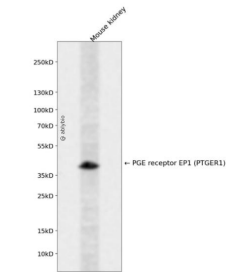
抗原信息	A synthetic peptide corresponding to a sequence within amino acids 350-450 of human PGE receptor EP1 (PTGER1) (P34995).
序列	VYILLRQAVLRQLRLPPRAGAKGGPAGLGLTPSAWEASSLRSSRHSGLSHF

靶点信息

研究背景	The protein encoded by this gene is a member of the G protein-coupled receptor family. This protein is one of four receptors identified for prostaglandin E2 (PGE2). Through a phosphatidylinositol-calcium second messenger system, G-Q proteins mediate this receptor's activity. Knockout studies in mice suggested a role of this receptor in mediating algesia and in regulation of blood pressure. Studies in mice also suggested that this gene may mediate adrenocorticotrophic hormone response to bacterial endotoxin.
基因ID	5731

基因名	PTGER1
Swiss	P34995
别名	PTGER1;EP1

产品验证



Western blot analysis of PGE receptor EP1 (PTGER1) expressed in Mouse kidney using PGE receptor EP 1 (PTGER1) Rabbit pAb at 1:1000. Secondary antibody: HRP Goat Anti-Rabbit IgG (H+L) at 1:5000. Lys ates/proteins: 30ug per lane. Blocking buffer: 5% non-fat dry milk in TBST. Detection: ECL Enhanced K it. Exposure time: 120s.

实验步骤

访问官网浏览详情: www.ablybio.cn