

# Leptin Receptor Rabbit pAb

货号: **B17403**

## 产品信息

|       |  |
|-------|--|
| 反应    | Human,Rat  |
| 宿主    | Rabbit   |
| 克隆性   | Polyclonal   |
| 预测反应  |  |
| 应用    | WB IF/ICC  |
| 推荐浓度  | <b>WB:</b> 1:500 - 1:1000<br><b>IF/ICC:</b> 1:50 - 1:200   |
| 理论分子量 | 96kDa/102kDa/103kDa/109kDa/132kDa  |
| 实测分子量 | 140KDa   |
| 形式    | Liquid   |
| 保存条件  | Store at -20°C. Avoid freeze / thaw cycles.<br>Buffer: PBS with 0.05% proclin300,50% glycerol,pH7.3. |
| 偶联物   | Unconjugated   |
| 阳性对照  | Rat lung,Rat liver   |
| 细胞定位  | Cell membrane,Secreted,Single-pass type I membrane protein   |
| 纯化    | Affinity purification  |

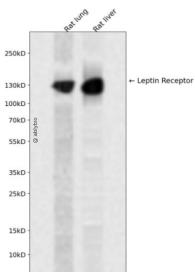
## 抗原信息

|      |   |
|------|---|
| 抗原信息 | Recombinant fusion protein containing a sequence corresponding to amino acids 1070-1165 of human LE PR (NP_002294.2). |
| 序列   | ENNDKKSIIYLVGVTSIKKRESGVLLTDKSRVSCPFPAPCLFTDIRVLQDSCSHFVENNINLGTSSKKTFFASYMPQFQTCSTQ<br>THKIMENKMCDLTV                |

## 靶点信息

|       |   |
|-------|---|
| 研究背景  | The protein encoded by this gene belongs to the gp130 family of cytokine receptors that are known to stimulate gene transcription via activation of cytosolic STAT proteins. This protein is a receptor for leptin (an adipocyte-specific hormone that regulates body weight), and is involved in the regulation of fat metabolism, as well as in a novel hematopoietic pathway that is required for normal lymphopoiesis. Mutations in this gene have been associated with obesity and pituitary dysfunction. Alternatively spliced transcript variants encoding different isoforms have been described for this gene. It is noteworthy that this gene and LEPROT gene (GeneID:54741) share the same promoter and the first 2 exons, however, encode distinct proteins (PMID:9207021). |
| 基因ID  | 3953  |
| 基因名   | LEPR  |
| Swiss | P48357  |
| 别名    | CD295;LEP-R;LEPRD;OB-R;OBR;LEPR   |

## 产品验证



Western blot analysis of Leptin Receptor expressed in Rat lung, Rat liver using Leptin Receptor Rabbit pAb at 1:1000. Secondary antibody: HRP Goat Anti-Rabbit IgG (H+L) at 1:5000. Lysates/proteins: 30ug per lane. Blocking buffer: 5% non-fat dry milk in TBST. Detection: ECL Enhanced Kit. Exposure time: 120s.

## 实验步骤

访问官网浏览详情: [www.ablybio.cn](http://www.ablybio.cn)