

# SLC16A7 Rabbit pAb

货号: B17393

产品信息

反应	Human,Rat
宿主	Rabbit
克隆性	Polyclonal
预测反应	
应用	WB
推荐浓度	<b>WB:</b> 1:500 - 1:2000
理论分子量	52kDa
实测分子量	52kDa
形式	Liquid
保存条件	Store at -20°C. Avoid freeze / thaw cycles. Buffer: PBS with 0.01% thiomersal,50% glycerol,pH7.3.
偶联物	Unconjugated
阳性对照	DU145,HepG2,HL-60,293T,rat brain
细胞定位	Cell membrane,Multi-pass membrane protein
纯化	Affinity purification

抗原信息

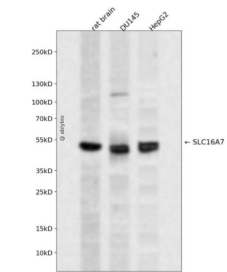
抗原信息	A synthetic peptide corresponding to a sequence within amino acids 400 to the C-terminus of human SLC 16A7 (NP_001257551.1).
序列	TGEYKMYMSCGAIVVAASVWLLIGNAINYRLAKERKEENARQKTRESEPLSKSKHSEDVNVKVSNAQSVTSERETNI

靶点信息

研究背景	This gene is a member of the monocarboxylate transporter family. Members in this family transport meta bolites, such as lactate, pyruvate, and ketone bodies. The protein encoded by this gene catalyzes the pro ton-linked transport of monocarboxylates and has the highest affinity for pyruvate. This protein has been reported to be more highly expressed in prostate and colorectal cancer specimens when compared to co ntrol specimens. Alternative splicing results in multiple transcript variants.
基因ID	9194

基因名	SLC16A7
Swiss	O60669
别名	SLC16A7;MCT2

产品验证



Western blot analysis of SLC16A7 expressed in rat brain,DU145,HepG2 using SLC16A7 Rabbit pAb at 1 :1000. Secondary antibody: HRP Goat Anti-Rabbit IgG (H+L) at 1:5000. Lysates/proteins: 30ug per lane. Blocking buffer: 5% non-fat dry milk in TBST. Detection: ECL Enhanced Kit. Exposure time: 120s.

实验步骤

访问官网浏览详情: [www.ablybio.cn](http://www.ablybio.cn)