

CKMT1B Rabbit pAb

货号: **B17387**

产品信息

| | |
|-------|--|
| 反应 | Human,Mouse,Rat |
| 宿主 | Rabbit |
| 克隆性 | Polyclonal |
| 预测反应 | |
| 应用 | WB IF/ICC IP |
| 推荐浓度 | WB: 1:500 - 1:2000 IF/ICC: 1:50 - 1:100 IP: 1:500 - 1:1000 |
| 理论分子量 | 47kDa/50kDa |
| 实测分子量 | 42kDa |
| 形式 | Liquid |
| 保存条件 | Store at -20°C. Avoid freeze / thaw cycles. Buffer: PBS with 0.01% thiomersal,50% glycerol,pH7.3. |
| 偶联物 | Unconjugated |
| 阳性对照 | Mouse brain,Mouse kidney,Rat brain |
| 细胞定位 | Intermembrane side,Mitochondrion inner membrane,Peripheral membrane protein |
| 纯化 | Affinity purification |

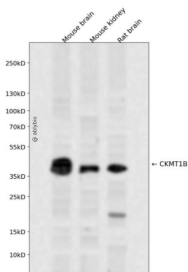
抗原信息

| | |
|------|---|
| 抗原信息 | Recombinant fusion protein containing a sequence corresponding to amino acids 1-85 of human CKMT1B (NP_066270.1). |
| 序列 | MAGPFSRLLSARPLRLLLAGAGSLAAGFLLRPEPVRAASERRRLYPPSAEYPDLRKHNNCMASHLTPAVYARLCDKTTPT GWT |

靶点信息

| | |
|-------|---|
| 研究背景 | Mitochondrial creatine (MtCK) kinase is responsible for the transfer of high energy phosphate from mitochondria to the cytosolic carrier, creatine. It belongs to the creatine kinase isoenzyme family. It exists as two isoenzymes, sarcomeric MtCK and ubiquitous MtCK, encoded by separate genes. Mitochondrial creatine kinase occurs in two different oligomeric forms: dimers and octamers, in contrast to the exclusively dimeric cytosolic creatine kinase isoenzymes. Many malignant cancers with poor prognosis have shown overexpression of ubiquitous mitochondrial creatine kinase; this may be related to high energy turnover and failure to eliminate cancer cells via apoptosis. Ubiquitous mitochondrial creatine kinase has 80% homology with the coding exons of sarcomeric mitochondrial creatine kinase. Two genes located near each other on chromosome 15 have been identified which encode identical mitochondrial creatine kinase proteins. |
| 基因ID | 1159 |
| 基因名 | |
| Swiss | P12532 |
| 别名 | CKMT1B;CKMT;CKMT1;UMTCK |

产品验证



Western blot analysis of CKMT1B expressed in Mouse brain, Mouse kidney, Rat brain using CKMT1B Rabbit pAb at 1:1000. Secondary antibody: HRP Goat Anti-Rabbit IgG (H+L) at 1:5000. Lysates/proteins: 30 ug per lane. Blocking buffer: 5% non-fat dry milk in TBST. Detection: ECL Enhanced Kit. Exposure time: 120s.

实验步骤

访问官网浏览详情: www.ablybio.cn