

# SPAG6 Rabbit pAb

货号: B17371

产品信息

反应	Human
宿主	Rabbit
克隆性	Polyclonal
预测反应	
应用	WB
推荐浓度	<b>WB:</b> 1:500 - 1:1000
理论分子量	30kDa/49kDa/52kDa/55kDa/63kDa
实测分子量	55kDa
形式	Liquid
保存条件	Store at -20°C. Avoid freeze / thaw cycles. Buffer: PBS with 0.01% thiomersal,50% glycerol,pH7.3.
偶联物	Unconjugated
阳性对照	Jurkat,PC-3
细胞定位	Cell projection,Cytoplasm,cilium,cytoskeleton,flagellum
纯化	Affinity purification

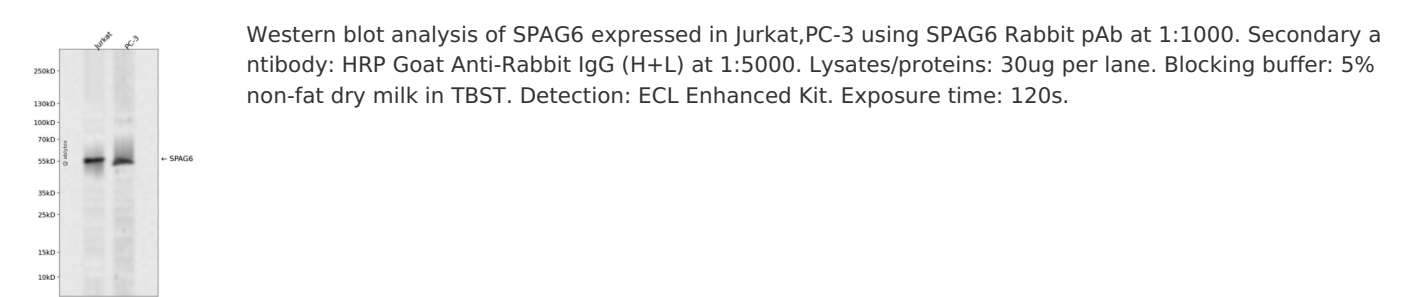
抗原信息

抗原信息	Recombinant fusion protein containing a sequence corresponding to amino acids 180-290 of human SPAG 6 (NP_758442.1).
序列	EIALKRIAASALSDIAKHSPELAQTVV DAGAVAH LAQMILNPDAKLKHQILSALSQVSKHSVDLAEMVVEAEIFPVVLTCLKD KDEYVKKNA STLIREIAKHTPELSQLVV

靶点信息

研究背景	The correlation of anti-sperm antibodies with cases of unexplained infertility implicates a role for these antibodies in blocking fertilization. Improved diagnosis and treatment of immunologic infertility, as well as identification of proteins for targeted contraception, are dependent on the identification and characterization of relevant sperm antigens. The protein expressed by this gene is recognized by anti-sperm antibodies from an infertile man. This protein localizes to the tail of permeabilized human sperm and contains eight contiguous armadillo repeats, a motif known to mediate protein-protein interactions. Studies in mice suggest that this protein is involved in sperm flagellar motility and maintenance of the structural integrity of mature sperm. Several transcript variants encoding different isoforms have been found for this gene.
基因ID	9576
基因名	SPAG6
Swiss	O75602
别名	SPAG6;CT141;Repro-SA-1;pf16

产品验证



实验步骤

访问官网浏览详情: [www.ablybio.cn](http://www.ablybio.cn)