

# Phospho-PLN-S16/T17 Rabbit pAb

货号: B17214

产品信息

反应	Human,Mouse,Rat
宿主	Rabbit
克隆性	Polyclonal
预测反应	
应用	WB
推荐浓度	<b>WB:</b> 1:500 - 1:1000
理论分子量	6kDa
实测分子量	13kDa/17KDa
形式	Liquid
保存条件	Store at -20°C. Avoid freeze / thaw cycles. Buffer: PBS with 0.01% thiomersal,50% glycerol,pH7.3.
偶联物	Unconjugated
阳性对照	HeLa,C6
细胞定位	endoplasmic reticulum,mitochondrial membrane,mitochondrion,perinuclear region of cytoplasm
纯化	Affinity purification

抗原信息

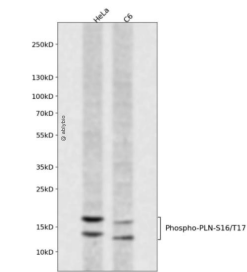
抗原信息	A synthetic phosphorylated peptide around S16 & T17 of human PLN (NP_002658.1).
序列	ASTIE

靶点信息

研究背景	The protein encoded by this gene is found as a pentamer and is a major substrate for the cAMP-dependent protein kinase in cardiac muscle. The encoded protein is an inhibitor of cardiac muscle sarcoplasmic reticulum Ca(2+)-ATPase in the unphosphorylated state, but inhibition is relieved upon phosphorylation of the protein. The subsequent activation of the Ca(2+) pump leads to enhanced muscle relaxation rates, thereby contributing to the inotropic response elicited in heart by beta-agonists. The encoded protein is a key regulator of cardiac diastolic function. Mutations in this gene are a cause of inherited human dilated cardiomyopathy with refractory congestive heart failure, and also familial hypertrophic cardiomyopathy.
基因ID	5350

基因名	PLN
Swiss	P26678
别名	CMD1P;CMH18;PLB;PLN

产品验证



Western blot analysis of Phospho-PLN-S16/T17 expressed in HeLa,C6 using Phospho-PLN-S16/T17 R abbit pAb at 1:1000. Secondary antibody: HRP Goat Anti-Rabbit IgG (H+L) at 1:5000. Lysates/proteins: 30ug per lane. Blocking buffer: 5% non-fat dry milk in TBST. Detection: ECL Enhanced Kit. Exposure time: 120s.

实验步骤

访问官网浏览详情: [www.ablybio.cn](http://www.ablybio.cn)