

# CORO1C Rabbit pAb

货号: B17165

## 产品信息

反应	Human
宿主	Rabbit
克隆性	Polyclonal
预测反应	
应用	WB
推荐浓度	<b>WB:</b> 1:500 - 1:2000
理论分子量	53kDa/54kDa/58kDa
实测分子量	60kDa
形式	Liquid
保存条件	Store at -20°C. Avoid freeze / thaw cycles. Buffer: PBS with 0.02% sodium azide,50% glycerol,pH7.3.
偶联物	Unconjugated
阳性对照	SW480
细胞定位	Cell membrane,Cell projection,Cytoplasm,cytoskeleton,lamellipodium
纯化	Affinity purification

## 抗原信息

抗原信息	Recombinant fusion protein containing a sequence corresponding to amino acids 375-474 of human CORO1C (NP_055140.1).
序列	EEWFEGKNADPILISLKHGYIPGKNRDLKVVKKNILDSKPTANKKCDLISIPKKTDTASVQNEAKLDEILKEIKSIKDTICNQDERISKLEQQMAKIAA

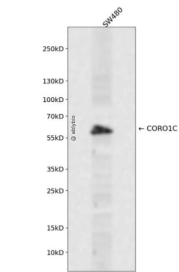
## 靶点信息

研究背景	This gene encodes a member of the WD repeat protein family. WD repeats are minimally conserved regions of approximately 40 amino acids typically bracketed by gly-his and trp-aspartate (GH-WD), which may facilitate formation of heterotrimeric or multiprotein complexes. Members of this family are involved in a variety of cellular processes, including cell cycle progression, signal transduction, apoptosis, and gene regulation. Three transcript variants encoding two different isoforms have been found for this gene.
基因ID	23603



基因名	CORO1C
Swiss	Q9ULV4
别名	CORO1C;HCRNN4

产品验证



Western blot analysis of CORO1C expressed in SW480 using CORO1C Rabbit pAb at 1:1000. Secondary antibody: HRP Goat Anti-Rabbit IgG (H+L) at 1:5000. Lysates/proteins: 30ug per lane. Blocking buffer: 5% non-fat dry milk in TBST. Detection: ECL Enhanced Kit. Exposure time: 120s.

实验步骤

访问官网浏览详情: [www.ablybio.cn](http://www.ablybio.cn)