

# CTSH Rabbit pAb

货号: B17069

## 产品信息

反应	Human,Mouse,Rat
宿主	Rabbit
克隆性	Polyclonal
预测反应	
应用	WB
推荐浓度	<b>WB:</b> 1:500 - 1:1000
理论分子量	37kDa
实测分子量	41KDa
形式	Liquid
保存条件	Store at -20°C. Avoid freeze / thaw cycles. Buffer: PBS with 0.05% proclin300,50% glycerol,pH7.3.
偶联物	Unconjugated
阳性对照	HepG2,A-549,Mouse liver,Mouse kidney,Rat liver,Rat kidney
细胞定位	Lysosome
纯化	Affinity purification

## 抗原信息

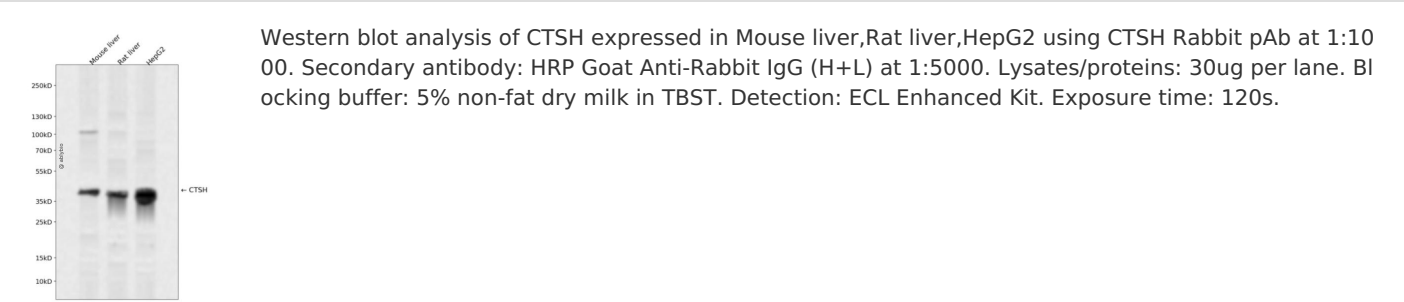
抗原信息	Recombinant fusion protein containing a sequence corresponding to amino acids 23-140 of human CTSH (NP_004381.2).
序列	AELCVNSLEKFHFKSWMSKHRKTYSTEEYHHRLQTFASNWRKINAHNNGNHTFKMALNQFSDMSFAEIKHKYLWSEPQN CSATKSNYLRGTGPYPSPVDWRKKGNFVSPVKNQGACGS

## 靶点信息

研究背景	The protein encoded by this gene is a lysosomal cysteine proteinase important in the overall degradation of lysosomal proteins. It is composed of a dimer of disulfide-linked heavy and light chains, both produced from a single protein precursor. The encoded protein, which belongs to the peptidase C1 protein family, c an act both as an aminopeptidase and as an endopeptidase. Increased expression of this gene has been c orrelated with malignant progression of prostate tumors. Alternate splicing of this gene results in multiple transcript variants encoding different isoforms.
------	--

基因ID	1512
基因名	CTSH
Swiss	P09668
别名	CTSH;ACC-4;ACC-5;ACC4;ACC5;CPSB

产品验证



实验步骤

访问官网浏览详情: [www.ablybio.cn](http://www.ablybio.cn)