

PEPD Rabbit pAb

货号: B17044

产品信息

反应	Human,Mouse,Rat
宿主	Rabbit
克隆性	Polyclonal
预测反应	
应用	WB
推荐浓度	WB: 1:500 - 1:2000
理论分子量	47kDa/49kDa/54kDa
实测分子量	54kDa
形式	Liquid
保存条件	Store at -20°C. Avoid freeze / thaw cycles. Buffer: PBS with 0.01% thiomersal,50% glycerol,pH7.3.
偶联物	Unconjugated
阳性对照	293T,HT-29,BT-474,Mouse kidney,Mouse liver,Rat kidney
细胞定位	extracellular exosome
纯化	Affinity purification

抗原信息

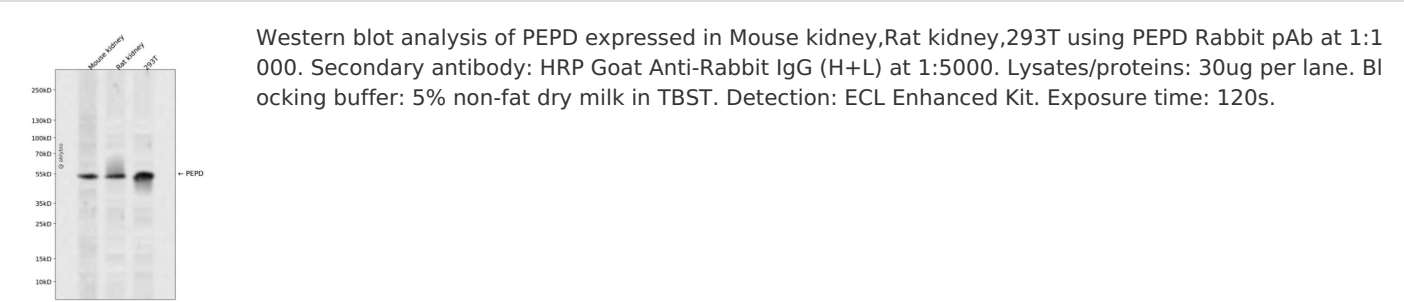
抗原信息	Recombinant fusion protein containing a sequence corresponding to amino acids 288-424 of human PEPD (NP_000276.2).
序列	ITCSFPANGKFTADQKAVYEAVLRSSRAVMGAMKPGVWWPDMHRLADRIHLEELAHMGILSGSVDAMVQAHLGAVFMP HGLGHFLGIDVHDVGGYPEGVERIDEPGLRSLRTARHLQPGMVLTVEPGIYFIDHLLDE

靶点信息

研究背景	This gene encodes a member of the peptidase family. The protein forms a homodimer that hydrolyzes dip eptides or tripeptides with C-terminal proline or hydroxyproline residues. The enzyme serves an importan t role in the recycling of proline, and may be rate limiting for the production of collagen. Mutations in this gene result in prolidase deficiency, which is characterized by the excretion of large amount of di- and tri- eptides containing proline. Multiple transcript variants encoding different isoforms have been found for th is gene.
------	---

基因ID	5184
基因名	PEPD
Swiss	P12955
别名	PEPD;PROLIDASE

产品验证



实验步骤

访问官网浏览详情: www.ablybio.cn