

KLK7 Rabbit pAb

货号: B17012

产品信息

| | |
|-------|--|
| 反应 | Human,Mouse |
| 宿主 | Rabbit |
| 克隆性 | Polyclonal |
| 预测反应 | |
| 应用 | WB |
| 推荐浓度 | WB: 1:500 - 1:2000 |
| 理论分子量 | 19kDa/27kDa |
| 实测分子量 | 28kDa |
| 形式 | Liquid |
| 保存条件 | Store at -20°C. Avoid freeze / thaw cycles. Buffer: PBS with 0.02% sodium azide,50% glycerol,pH7.3. |
| 偶联物 | Unconjugated |
| 阳性对照 | 293T,HeLa,HepG2,Mouse liver,Mouse heart,Mouse brain,Mouse kidney |
| 细胞定位 | Secreted |
| 纯化 | Affinity purification |

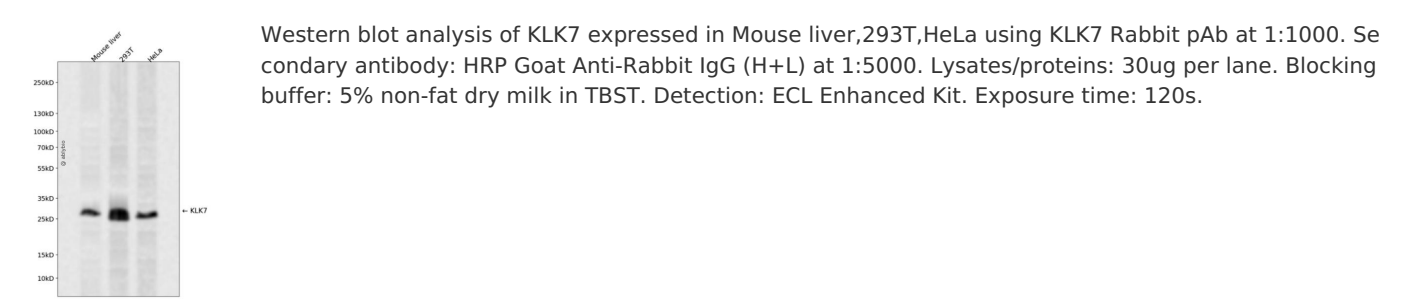
抗原信息

| | |
|------|---|
| 抗原信息 | Recombinant fusion protein containing a sequence corresponding to amino acids 30-253 of human KLK7 (NP_644806.1). |
| 序列 | IIDGAPCARGSHPWQVALLSGNQLHCGGVLVNERWVLTAAHCKMNEYTVHLGSDTLGDRRAQRIKASKSFRHPGYSTQT HVNDLMLVKLNSQARLSSMVKKVRLPSRCEPPGTTCTVSGWGTTTSPDVTFPSDLMCVDVKLISPQDCTKVYKDLENS MLCAGIPDSKKNACNGDSGGPLVCRGTLQGLVSWGTFPCGQPNDPGVYTQVCKFTKWINDTMKKHR |

靶点信息

| | |
|-------|--|
| 研究背景 | This gene encodes a member of the kallikrein subfamily of serine proteases. These enzymes have diverse physiological functions and many kallikrein genes are biomarkers for cancer. The encoded protein has chymotrypsin-like activity and plays a role in the proteolysis of intercellular cohesive structures that precede desquamation, the shedding of the outermost layer of the epidermis. The encoded protein may play a role in cancer invasion and metastasis, and increased expression of this gene is associated with unfavorable prognosis and progression of several types of cancer. Polymorphisms in this gene may play a role in the development of atopic dermatitis. Alternatively spliced transcript variants encoding multiple isoforms have been observed for this gene, which is one of fifteen kallikrein subfamily members located in a gene cluster on chromosome 19. |
| 基因ID | 5650 |
| 基因名 | KLK7 |
| Swiss | P49862 |
| 别名 | KLK7;PRSS6;SCCE;hK7 |

产品验证



实验步骤

访问官网浏览详情: www.ablybio.cn