

RAB6A Rabbit pAb

货号: B16989

产品信息

反应	Human,Mouse
宿主	Rabbit
克隆性	Polyclonal
预测反应	
应用	WB
推荐浓度	WB: 1:500 - 1:2000
理论分子量	11kDa/19kDa/23kDa
实测分子量	33kDa
形式	Liquid
保存条件	Store at -20°C. Avoid freeze / thaw cycles. Buffer: PBS with 0.02% sodium azide,50% glycerol,pH7.3.
偶联物	Unconjugated
阳性对照	BT-474,OVCAR3,SW480,HT-29,293T,SH-SY5Y,Mouse brain,Mouse lung,Mouse intestine
细胞定位	Golgi apparatus,Golgi apparatus membrane,Lipid-anchor
纯化	Affinity purification

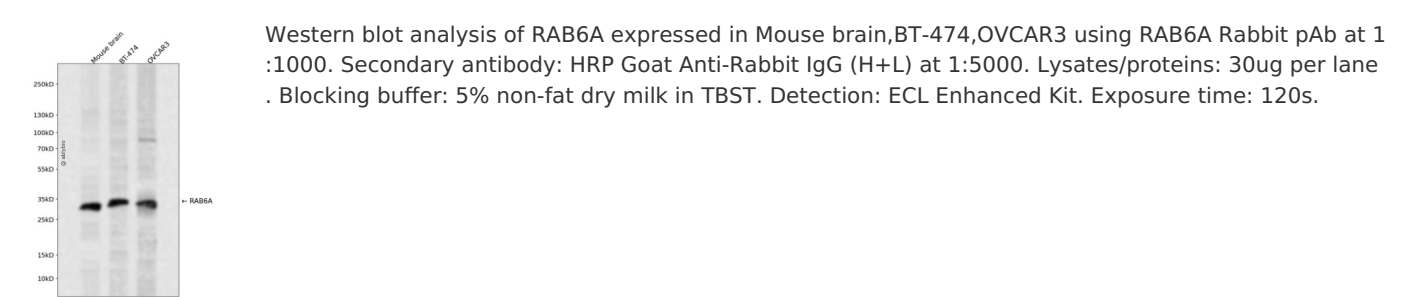
抗原信息

抗原信息	Recombinant fusion protein containing a sequence corresponding to amino acids 1-200 of human RAB6A (NP_002860.2).
序列	MSTGGDFGNPLRKFKLVFLGEQSVGKTSLITRFMYDSFDNTYQATIGIDFLSKTMYLEDRTIRLQLWDTAGQERFRSLIPSY IRDSAAAVVYDITNVNSFQQTTKWIDDVRTERGSDVIIMLVGNKTDLADKRQVSIEEGERKAKELNVMFIETSAKAGYNV KQLFRRVAAALPGMESTQDRSREDMIDIKLEKPQEQP

靶点信息

研究背景	This gene encodes a member of the RAB family, which belongs to the small GTPase superfamily. GTPases of the RAB family bind to various effectors to regulate the targeting and fusion of transport carriers to acceptor compartments. This protein is located at the Golgi apparatus, which regulates trafficking in both a retrograde (from early endosomes and Golgi to the endoplasmic reticulum) and an anterograde (from the Golgi to the plasma membrane) directions. Myosin II is an effector of this protein in these processes. This protein is also involved in assembly of human cytomegalovirus (HCMV) by interacting with the cellular protein Bicaudal D1, which interacts with the HCMV virion tegument protein, pp150. Multiple alternatively spliced transcript variants encoding different isoforms have been identified.
基因ID	5870
基因名	RAB6A
Swiss	P20340
别名	RAB6A;RAB6

产品验证



实验步骤

访问官网浏览详情: www.ablybio.cn