

# PHLDA2 Rabbit pAb

货号: **B16810**

## 产品信息

反应	Human
宿主	Rabbit
克隆性	Polyclonal
预测反应	
应用	WB
推荐浓度	<b>WB:</b> 1:500 - 1:2000
理论分子量	17kDa
实测分子量	20kDa
形式	Liquid
保存条件	Store at -20°C. Avoid freeze / thaw cycles. Buffer: PBS with 0.02% sodium azide,50% glycerol,pH7.3.
偶联物	Unconjugated
阳性对照	SW620,SKOV3,HeLa
细胞定位	Cytoplasm,Membrane,Peripheral membrane protein
纯化	Affinity purification

## 抗原信息

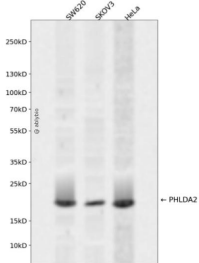
抗原信息	Recombinant fusion protein containing a sequence corresponding to amino acids 1-152 of human PHLDA 2 (NP_003302.1).
序列	MKSPDEVLREGELEKRSDSLFQLWKKKRGVLTSDRLSLFPASPRARPKEKELRFHSILKVDCVERTGKYVYFTIVTTDHKEIDFRCAGESCWNAIALALIDFQNRRLQDFRSRQERTAPAAPAEDAVAAAAAAPSEPESEPSRPSQPQKPRTP

## 靶点信息

研究背景	This gene is located in a cluster of imprinted genes on chromosome 11p15.5, which is considered to be an important tumor suppressor gene region. Alterations in this region may be associated with the Beckwith-Wiedemann syndrome, Wilms tumor, rhabdomyosarcoma, adrenocortical carcinoma, and lung, ovarian, and breast cancer. This gene has been shown to be imprinted, with preferential expression from the maternal allele in placenta and liver.
基因ID	7262

基因名	PHLDA2
Swiss	Q53GA4
别名	PHLDA2;BRW1C;BWR1C;HLDA2;IPL;TSSC3

## 产品验证



Western blot analysis of PHLDA2 expressed in SW620,SKOV3,HeLa using PHLDA2 Rabbit pAb at 1:1000. Secondary antibody: HRP Goat Anti-Rabbit IgG (H+L) at 1:5000. Lysates/proteins: 30ug per lane. Blocking buffer: 5% non-fat dry milk in TBST. Detection: ECL Enhanced Kit. Exposure time: 120s.

## 实验步骤

访问官网浏览详情: [www.ablybio.cn](http://www.ablybio.cn)