

Islet1 Rabbit pAb

货号: B16758

产品信息

反应	Human,Mouse,Rat
宿主	Rabbit
克隆性	Polyclonal
预测反应	
应用	WB
推荐浓度	WB: 1:500 - 1:2000
理论分子量	39kDa
实测分子量	50kDa
形式	Liquid
保存条件	Store at -20°C. Avoid freeze / thaw cycles. Buffer: PBS with 0.02% sodium azide,50% glycerol,pH7.3.
偶联物	Unconjugated
阳性对照	HeLa,SH-SY5Y,Mouse thymus,Rat thymus
细胞定位	Nucleus
纯化	Affinity purification

抗原信息

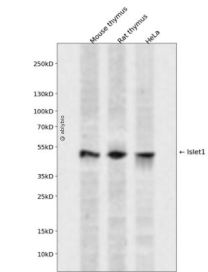
抗原信息	A synthetic peptide corresponding to a sequence within amino acids 200-300 of human Islet1 (NP_002193.2).
序列	YAANPRPDALMKEQLVEMTGLSPRVIRVWFQNKRCDDKKRSIMMKQLQQQPNDKTNIQGMTGTPMVAASPERHDGGLQANPVEVQSYQPPWKVLSDFALQ

靶点信息

研究背景	This gene encodes a member of the LIM/homeodomain family of transcription factors. The encoded protein binds to the enhancer region of the insulin gene, among others, and may play an important role in regulating insulin gene expression. The encoded protein is central to the development of pancreatic cell lineages and may also be required for motor neuron generation. Mutations in this gene have been associated with maturity-onset diabetes of the young.
基因ID	3670

基因名	ISL1
Swiss	P61371
别名	ISL1;ISLET1;Isl-1

产品验证



Western blot analysis of Islet1 expressed in Mouse thymus,Rat thymus,HeLa using Islet1 Rabbit pAb at 1 :1000. Secondary antibody: HRP Goat Anti-Rabbit IgG (H+L) at 1:5000. Lysates/proteins: 30ug per lane. Blocking buffer: 5% non-fat dry milk in TBST. Detection: ECL Enhanced Kit. Exposure time: 120s.

实验步骤

访问官网浏览详情: www.ablybio.cn