

# HAND2 Rabbit pAb

货号: B16499

## 产品信息

|       |  |
|-------|--|
| 反应    | Human,Mouse,Rat  |
| 宿主    | Rabbit   |
| 克隆性   | Polyclonal   |
| 预测反应  |  |
| 应用    | WB IF/ICC  |
| 推荐浓度  | <b>WB:</b> 1:500 - 1:2000<br><b>IF/ICC:</b> 1:50 - 1:100   |
| 理论分子量 | 20kDa/23kDa  |
| 实测分子量 | 26kDa  |
| 形式    | Liquid   |
| 保存条件  | Store at -20°C. Avoid freeze / thaw cycles.<br>Buffer: PBS with 0.01% thiomersal,50% glycerol,pH7.3. |
| 偶联物   | Unconjugated   |
| 阳性对照  | Mouse liver,Mouse heart  |
| 细胞定位  | Nucleus  |
| 纯化    | Affinity purification  |

## 抗原信息

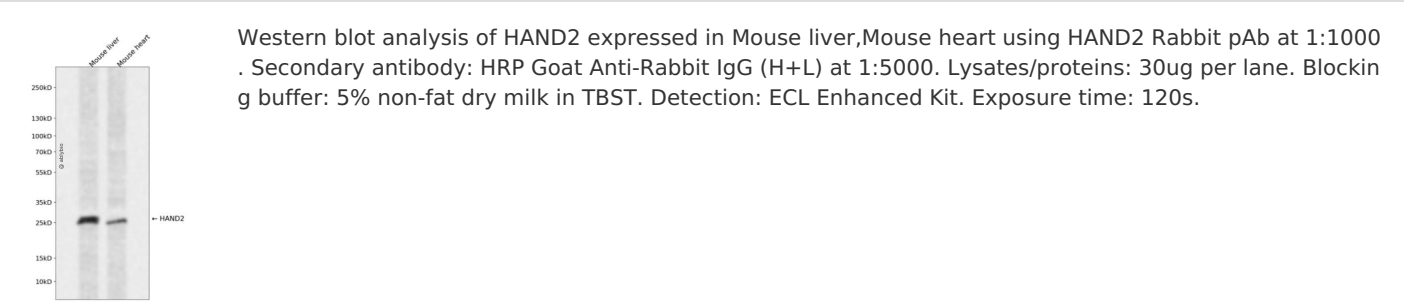
|      |  |
|------|--|
| 抗原信息 | A synthetic peptide corresponding to a sequence within amino acids 150-220 of human HAND2 (NP_068808.1). |
| 序列   | YLMDLLAKDDQNGEAEAFKAEIKKTDVKEEKRKKEKELNEILKSTVSSNDKKTKGRTGWPQHVVWALELKQ                                  |

## 靶点信息

|      |   |
|------|---|
| 研究背景 | The protein encoded by this gene belongs to the basic helix-loop-helix family of transcription factors. This gene product is one of two closely related family members, the HAND proteins, which are asymmetrically expressed in the developing ventricular chambers and play an essential role in cardiac morphogenesis. Working in a complementary fashion, they function in the formation of the right ventricle and aortic arch arteries, implicating them as mediators of congenital heart disease. In addition, this transcription factor plays an important role in limb and branchial arch development. |
|------|---|

|       |                                       |
|-------|---------------------------------------|
| 基因ID  | 9464                                  |
| 基因名   | HAND2                                 |
| Swiss | P61296                                |
| 别名    | HAND2;DHAND2;Hed;Thing2;bHLHa26;dHand |

产品验证



实验步骤

访问官网浏览详情: [www.ablybio.cn](http://www.ablybio.cn)