

# ELF5 Rabbit pAb

货号: B16443

## 产品信息

反应	Human,Mouse,Rat
宿主	Rabbit
克隆性	Polyclonal
预测反应	
应用	WB IHC IF/ICC
推荐浓度	<b>WB:</b> 1:500 - 1:1000 <b>IHC:</b> 1:50 - 1:200 <b>IF/ICC:</b> 1:50 - 1:100
理论分子量	16kDa/18kDa/30kDa/31kDa
实测分子量	31KDa
形式	Liquid
保存条件	Store at -20°C. Avoid freeze / thaw cycles. Buffer: PBS with 0.01% thiomersal,50% glycerol,pH7.3.
偶联物	Unconjugated
阳性对照	Rat lung,Rat kidney
细胞定位	Nucleus
纯化	Affinity purification

## 抗原信息

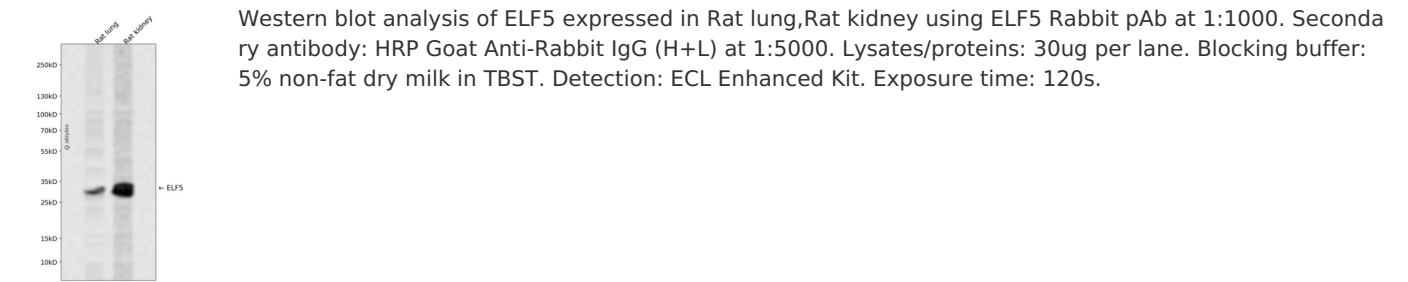
抗原信息	Recombinant fusion protein containing a sequence corresponding to amino acids 40-150 of human ELF5 ( NP_938195.1).
序列	EEYYPAFEHQACDSYWTSVHPEYWTKRHVWEWLQFCCDQYKLDTCISFCNFNISGLQLCSMTQEEFVEAAGLCGEYL YFILQNIRTQGYSTFNDAAEESKATIKDYADSN

## 靶点信息

研究背景	The protein encoded by this gene is a member of an epithelium-specific subclass of the Ets transcription factor family. In addition to its role in regulating the later stages of terminal differentiation of keratinocytes, it appears to regulate a number of epithelium-specific genes found in tissues containing glandular epithelium such as salivary gland and prostate. It has very low affinity to DNA due to its negative regulatory domain at the amino terminus. Several alternatively spliced transcript variants encoding different isoforms have been described for this gene.
------	---

基因ID	2001
基因名	ELF5
Swiss	Q9UKW6
别名	ELF5;ESE2

产品验证



实验步骤

访问官网浏览详情: [www.ablybio.cn](http://www.ablybio.cn)