

SH3GL1 Rabbit pAb

货号: B16334

产品信息

反应	Human,Mouse,Rat,Monkey
宿主	Rabbit
克隆性	Polyclonal
预测反应	
应用	WB IHC
推荐浓度	WB: 1:500 - 1:2000 IHC: 1:100 - 1:200
理论分子量	34kDa/36kDa/41kDa
实测分子量	41kDa
形式	Liquid
保存条件	Store at -20°C. Avoid freeze / thaw cycles. Buffer: PBS with 0.02% sodium azide,50% glycerol,pH7.3.
偶联物	Unconjugated
阳性对照	COS-7
细胞定位	Cell projection,Cytoplasm,Early endosome membrane,Peripheral membrane protein,podosome
纯化	Affinity purification

抗原信息

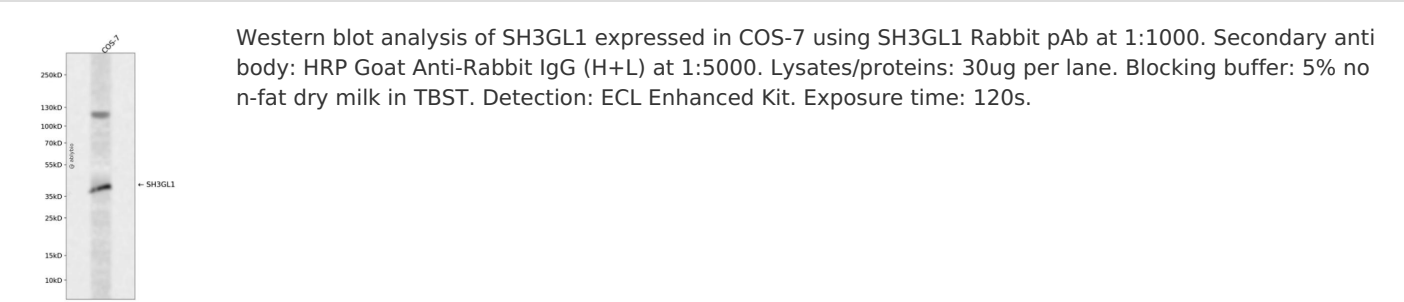
抗原信息	Recombinant fusion protein containing a sequence corresponding to amino acids 219-368 of human SH3 GL1 (NP_003016.1).
序列	VDAQLDYHRQAVQILDELAEKLKRRMREASSRPKREYKPKPREPFDLGEPEQSNGGFPCTTAPKIAASSFRSSDKPIRTPS RSMPLDQPSCKALYDFEPENDGELGFHEGDVITLTNQIDENWYEGMLDQGSGFFPLSYVEVLVPLPQ

靶点信息

研究背景	This gene encodes a member of the endophilin family of Src homology 3 domain-containing proteins. The encoded protein is involved in endocytosis and may also play a role in the cell cycle. Overexpression of th is gene may play a role in leukemogenesis, and the encoded protein has been implicated in acute myeloid leukemia as a fusion partner of the myeloid-lymphoid leukemia protein. Pseudogenes of this gene are loc ated on the long arm of chromosomes 11 and 17. Alternatively spliced transcript variants encoding multi ple isoforms have been observed for this gene.
------	--

基因ID	6455
基因名	SH3GL1
Swiss	Q99961
别名	SH3GL1;CNSA1;EEN;SH3D2B;SH3P8

产品验证



实验步骤

访问官网浏览详情: www.ablybio.cn