

# P2RY1 Rabbit pAb

货号: B16234

## 产品信息

反应	Human,Mouse,Rat
宿主	Rabbit
克隆性	Polyclonal
预测反应	
应用	WB
推荐浓度	<b>WB:</b> 1:500 - 1:2000
理论分子量	42kDa
实测分子量	42kDa
形式	Liquid
保存条件	Store at -20°C. Avoid freeze / thaw cycles. Buffer: PBS with 0.02% sodium azide,50% glycerol,pH7.3.
偶联物	Unconjugated
阳性对照	22Rv1,Rat liver,Rat intestine
细胞定位	Cell membrane,Multi-pass membrane protein
纯化	Affinity purification

## 抗原信息

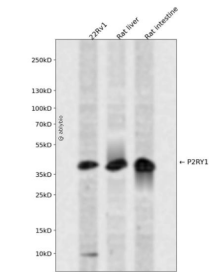
抗原信息	Recombinant fusion protein containing a sequence corresponding to amino acids 274-373 of human P2RY 1 (NP_002554.1).
序列	IPFHVMKTMNLRARLDFQTPAMCAFNDRVYATYQVTRGLASLNSCVDPILYFLAGDTFRRRLSRATRKASRRSEANLQSKS EDMTLNILPEFKQNGDTSL

## 靶点信息

研究背景	The product of this gene belongs to the family of G-protein coupled receptors. This family has several receptor subtypes with different pharmacological selectivity, which overlaps in some cases, for various adenosine and uridine nucleotides. This receptor functions as a receptor for extracellular ATP and ADP. In platelets binding to ADP leads to mobilization of intracellular calcium ions via activation of phospholipase C, a change in platelet shape, and probably to platelet aggregation.
基因ID	5028

基因名	P2RY1
Swiss	P47900
别名	P2RY1;P2Y1

产品验证



Western blot analysis of P2RY1 expressed in 22Rv1,Rat liver,Rat intestine using P2RY1 Rabbit pAb at 1:1000. Secondary antibody: HRP Goat Anti-Rabbit IgG (H+L) at 1:5000. Lysates/proteins: 30ug per lane. Blocking buffer: 5% non-fat dry milk in TBST. Detection: ECL Enhanced Kit. Exposure time: 120s.

实验步骤

访问官网浏览详情: [www.ablybio.cn](http://www.ablybio.cn)